

ATAL BHUJAL YOJANA (Atal Jal)

State: Maharashtra

Department: Groundwater Surveys and Development Agency.

HYDROGEOLOGICAL REPORT

BLOCK : Khatav

DISTRICT : Satara

YEAR : 2020

*Towards partial fulfillment of requirements for Disbursement of
Incentive under DLI -I*

DATE OF DISCLOSURE: ...25/11/2020

HYDROGEOLOGICAL REPORT

(YEAR : 2019-20)

STATE	:	Maharashtra
DISTRICT	:	Satara
BLOCK/TALUK	:	Khatav
BLOCK/TALUK HQs	:	Vaduj

A GENERAL INFORMATION			
1. Geographical area (Ha)	: 145282.55		
2. No. of Gram Panchayats	: 143		
3. No. of towns	: 0		
4. No. of villages	: 143		
5. Population (2011)	Male	Female	Total
	136802	138472	275274
6. Rainfall (mm)	Monsoon	Non-monsoon	Annual
	621.91	201.94	823.85
7. River basin	: Krishna		
8. Major soil types	: Black Cotton Soil		

B LAND USE	
1. Forest area (Ha)	: 4121
2. Cultivable area (Ha)	: 110335
3. Net sown area (Ha)	: 92436
4. Gross cropped area (Ha)	: 121041

C CROPPING PATTERN (As in 2019-20)				
1. Major crops grown	Kharif	Rabi	Summer	Perennial
	Paddy	Sorghum	Groundnut	Sugarcane
	Sorghum	Wheat	Maize	Horticulture crop
	Bajara	Maize		
	Maize	Pulses		
	Pulses			
	Sunflower			

D IRRIGATION FACILITIES (As in 2019-20)							
1.	Net irrigated area (Ha)	:	21539				
2.	Gross irrigated area (Ha)	:					
3.	Area under irrigation (Ha) (Source-wise)	:	DW	BW/TW	Tanks/Ponds	Canals	Others
			21539	0	0	0	0

E GEOLOGY & HYDROGEOLOGY			
1.	Predominant rock type	:	Hard Rock / Soft Rock/Both
2.	Major geological formations	:	Deccan traps
3.	Important water-bearing formations	:	Fractured and jointed basalt
4.	Status of coverage under NAQUIM	:	Covered.

F GROUND WATER CONDITIONS								
1.	No. of wells used for Water Level (WL) monitoring.	:	Open wells			BW/TW/ PZ		
			CGWB	SGWD	Total	CGWB	SGWD	Total
			17	17	34	--	3	3
2.	Monitoring mechanism (Nos.)	:	Manual		DWLR	Telemetry		
			CGWB	SGWD	CGWB	SGWD	CGWB	SGWD
			17	17	--	0	--	0
3.	Monitoring frequency	:	Agency	No. of times monitored/year				
			CGWB	4				
			SGWD	4				
4.	Period of water level data availability.	:	Agency	Period of WL data availability (From - To)				
				From (year)	To (year)			
			CGWB	2015	2019			
			SGWD	2015	2019			
5.	Water level range (m.bgl)	:	Minimum/Village		Maximum/Village			
	Pre-monsoon (April-May 2020)		6.10/ Yeliv		14.9/Wakeshwar			
	Post-monsoon (September 2020)		0.10/Kokarale		11.00/Chitali			
6.	Seasonal WL fluctuation range (m)	:	Minimum/ Village		Maximum/ Village			
			4/Mayani		10.7/ Kokarale			

G GROUND WATER QUALITY							
1.	No. of wells used for Water Quality (WQ) monitoring.	Open Wells			BW/TW/ PZ		
		CGWB	SGWD	Total	CGWB	SGWD	Total
		17	17	34	--	0	0
2.	Monitoring frequency	Agency	No. of times monitored/year				
		CGWB	2				
		SGWD	2(Pre and Post mansoon)				
3.	Period of water quality data availability	Agency	Period of WQ data availability (Years)				
		CGWB	2015-19				
		SGWD	2015-19				
4.	Parameters analysed	Agency	Parameters Analysed				
		CGWB	Temperature,pH,EC,TDS,Total Hardness,Alkalinity,calcium,Chloride,Ni trate,Sulphate,fluoride,Iron				
		SGWD	Temperature,pH,EC,TDS,Total Hardness,Alkalinity,calcium,Chloride,Ni trate,Sulphate,fluoride,Iron				
5.	Known ground water quality issues, if any	Nitrate					

H. GROUND WATER RESOURCES					
1.	Latest assessment year	2017			
2.	Assessment Unit	Taluk/ Block/Watershed			
3.	Annual extractable GW resource (ha.m)	10438.64			
4.	Current annual GW extraction (ha.m)	8897.94			
5.	Net GW availability for future use (ha.m)	1466.08			
6.	Stage of GW extraction (%)	85.24			
7.	Category of block/taluk/(2017)	Semi Critical			
8.	Category of block/taluk/ in previous assessments	2013	2011	2009	2004
		Semi Critical	safe	safe	safe

I WATER-RELATED SCHEMES	
1.	Schemes with a bearing on ground water, being implemented in the block / taluk.
Centrally Sponsored /Central Sector Schemes	i) Atal Solar Scheme
	ii) MGNREGA
	iii)
	iv)
State Schemes	i) CM - Solar Scheme
	ii) Dr Babasaheb Ambedkar Krishi Yojana
	iii) Jal Jeevan Mission
	iv)

J GROUND WATER RELATED ISSUES	
1.	Ground water related issues of the block/
i) Issues related to GW availability	: Tankerfed and Drought prone Taluka
ii) Issues related to GW quality	: Nitrate
iii) Other issues if any.	:

TABLE-01													
BASIC DATA OF WATER LEVEL (WL)/WATER QUALITY (WQ) WELLS LOCATIONS													
STATE-MAHARASHTRA, DISTRICT-SATARA, TALUKA-KHATAV													
Sl. No	Well No.	Village Name	Long.	Lat.	Type of well (DW/BW/TW/PZ)	Reduced Level (m.amsl)	Aquifer tapped	Height of measuring point (m.agl)	Depth (m.bgl)	Diameter (m)	Purpose of monitoring (WL / WQ / WL & WQ)	Monitoring mechanism (Manual/ DWLR/ Telemetry)	Agency
1	W173030074284001	Ambavade	74.4830830	17.5017780	DW	665	FJJB	0.6	15	6.9	WL	Manual	SGWD
2	W173225074200401	Aundh	74.3510317	17.5374713	DW	775	FJJB	1	13.11	7	WL	Manual	SGWD
3	W172804074243601	Bhushangad	74.4052410	17.4686513	DW	756	FJJB	0.8	14	11	WL	Manual	SGWD
4	W174610074195001	Budh-New	74.3316970	17.7744432	DW	824	FJJB	0.5	14.5	10	WL	Manual	SGWD
5	W172520074295001	Chitali	74.5003367	17.4210035	DW	653	FJJB	0	13.9	2.4	WL	Manual	SGWD
6	W173045074333001	Datewadi	74.5566226	17.5133246	DW	721	FJJB	0.8	13	2.5	WL	Manual	SGWD
7	W173420074313001	Katarkhatav	74.5175100	17.5684067	DW	705	FJJB	0	13.3	5.3	WL	Manual	SGWD
8	W173625074191001	Kokarale	74.3171698	17.6067578	DW	771	FJJB	1.4	14.5	6	WL	Manual	SGWD
9	W173548074233001	Kuroli	74.3902306	17.5947268	DW	736	FJJB	1	13	4.5	WL	Manual	SGWD
10	W174650074174002	Lalgun	74.2913098	17.7741178	DW	812	FJJB	0	16	6	WL	Manual	SGWD
11	W172625074325001	Mayani	74.5506474	17.4447168	DW	674	FJJB	1	9.9	3.9	WL	Manual	SGWD
12	W175030074165001	Mol	74.2861521	17.8393235	DW	863	FJJB	0.2	11.5	6.8	WL	Manual	SGWD
13	W172700074243001	Musandwadi	74.4265493	17.4899294	DW	705	FJJB	0	10	8	WL	Manual	SGWD
14	W172740074191703	Pusesavali.	74.3184253	17.4607505	DW	714	FJJB	0.8	13.9	4	WL	Manual	SGWD
15	W174320074161002	Vardhangad-New	74.2886075	17.7166776	DW	815	FJJB	0	12.2	11	WL	Manual	SGWD
16	W173610074250001	Wakeshwar	74.4207407	17.6010664	DW	717	FJJB	0	15	6.3	WL	Manual	SGWD
17	W172952074201701	Yeliv	74.3355869	17.4977856	DW	733	FJJB	0	10	10	WL	Manual	SGWD

TABLE-01-Continued													
Sl. No	Well No.	Village Name	Long.	Lat.	Type of well (DW/BW/TW/PZ)	Reduced Level (m.amsl)	Aquifer tapped	Height of measuring point (m.agl)	Depth (m.bgl)	Diameter (m)	Purpose of monitoring (WL WQ / WL & WQ)	Monitoring mechanism (Manual/ DWLR/Telemetry)	Agency
1	W172614074324801	Mayani	74.5467	17.4372	DW	761	VB		12.6		WL & WQ	Manual	CGWB
2	W172743074370501	Vikhle	74.6181	17.4619	DW	729.9	VB		12.05		WL & WQ	Manual	CGWB
3	W172800074490001	Shenwadi	74.8167	17.4667	DW	641.85	VB		8.32		WL & WQ	Manual	CGWB
4	W173200074200001	Aundh	74.3333	17.5333	DW	796.2	VB		13.15		WL & WQ	Manual	CGWB
5	W173400074310001	Katar Khatav	74.5167	17.5667	DW	717.1	VB		10.25		WL & WQ	Manual	CGWB
6	W173800074470001	Mhaswad	74.7833	17.6333	DW	608.71	VB		16.53		WL & WQ	Manual	CGWB
7	W173900074310001	Pingli	74.5167	17.65	DW	713.04	VB		11.75		WL & WQ	Manual	CGWB
8	W174030074360001	Gondavale Bk.	74.6	17.675	DW	682.79	VB		10.25		WL & WQ	Manual	CGWB
9	W174226074330501	Dahivadi	74.5514	17.7072	DW	710.2	VB		10		WL & WQ	Manual	CGWB
10	W174300074190001	Pusegaon	74.3167	17.7167	DW	790.7	VB		9.11		WL & WQ	Manual	CGWB
11	W174427074414901	Mardi	74.6969	17.7408	DW	652	VB		10		WL & WQ	Manual	CGWB
12	W174609074195101	Budh	74.3308	17.7692	DW	838	VB		10		WL & WQ	Manual	CGWB
13	W174704074361501	Wavarhire-1	74.6042	17.7844	DW	697.7	VB		10		WL & WQ	Manual	CGWB
14	W175015074161001	Manjarvadi (Mol)	74.2694	17.8375	DW	902.75	VB		9		WL & WQ	Manual	CGWB
15	W175100073570001	Udtara	73.95	17.85	DW	665.64	VB		8.9		WL & WQ	Manual	CGWB
16	W175700073540001	Wai	73.9	17.95	DW	713.77	VB		6.7		WL & WQ	Manual	CGWB
17	W175800073590001	Surur	73.9833	17.9667	DW	756.72	VB		21.5		WL & WQ	Manual	CGWB

Note: Type of well: **DW** (Dug well); **BW** (Bore well - hard rock); **TW** (Tube well - soft rock); **PZ** (Piezometer)

TABLE-02													
WATER LEVEL (WL) DATA OF MONITORING WELLS-SGWD													
STATE-MAHARASHTRA, DISTRICT-SATARA, TALUKA-KHATAV													
Sr.No.	Well ID	Well Type	Village	May-15	Oct-15	May-16	Oct-16	May-17	Oct-17	May-18	Oct-18	May-19	Oct-19
1	W173030074284001	DW	Ambavade	9.3	8.8	14.4	4.8	12	6.5	8.8	10	14.9	7.2
2	W173225074200401	DW	Aundh	6.3	2.8	6.4	1.7	6.3	2.6	6.7	2.7	9	1.1
3	W172804074243601	DW	Bhushangad	8.5	3.8	7.1	4.6	10	1.4	8.3	6.4	7.4	2.2
4	W174610074195001	DW	Budh-New	10.6	8.1	10	6.1	9.6	4	10.1	7	10.6	4.2
5	W172520074295001	DW	Chitali	11.9	11.8	12.6	8.7	13.5	8.8	12.3	9.8	11.9	11
6	W173045074333001	DW	Datewadi	7.9	0.8	9.7	0.2	12	0.7	8.2	0.7	6.8	0.6
7	W173420074313001	DW	Katarkhatav	10	9.4	12.2	5.6	12.6	5.1	11	6.3	10.3	6.5
8	W173625074191001	DW	Kokarale	9.8	3.1	10.3	1.7	10.3	3	8.2	1.3	10.8	0.1
9	W173548074233001	DW	Kuroli	8.7	6.5	9.5	6.3	8.6	7.8	7.9	6.7	10	6
10	W174650074174002	DW	Lalgun	12.2	9.8	15.7	8	14.5	11.2	13.5	9	14.9	6.2
11	W172625074325001	DW	Mayani	5.8	3.8	7.2	3.9	6.5	3.9	6.4	4.2	7.2	3.2
12	W175030074165001	DW	Mol	9.1	3.2	9.5	2.5	9.2	2.7	9.6	6	12.6	1.7
13	W172700074243001	DW	Musandwadi	8.9	5.1	9	4.3	8.7	3.7	9.1	7.7	9.3	2
14	W172740074191703	DW	Pusesavali.	8.5	5.7	9.4	1.2	8	1	7.1	2.4	9.4	0.7
15	W174320074161002	DW	Vardhangad-New	6.2	3.8	6.8	0.7	6.1	4.9	7.4	1.8	6.6	0.2
16	W173610074250001	DW	Wakeshwar	13	15	15	12.1	15	14.2	15	14	14.9	0.2
17	W172952074201701	DW	Yeliv	5.5	1.2	3	1	1.7	1.4	5.4	2.9	6.1	0.2

TABLE-02-Continued													
WATER LEVEL (WL) DATA OF MONITORING WELLS-CGWB													
STATE-MAHARASHTRA, DISTRICT-SATARA, TALUKA-KHATAV													
Sr.No.	Well ID	Well Type	Village	May-15	Nov-15	May-16	Nov-16	May-17	Nov-17	May-18	Nov-18	May-19	Nov-19
1	W172614074324801	DW	Mayani				8.5	12	7.8	9.6	8.7	12.59	6.4
2	W172743074370501	DW	Vikhle	4.4		7.75	4.1	7.2	5	3.6		12.04	1.4
3	W172800074490001	DW	Shenwadi	4.8	2.4	5.35	3.2	8.32	2.5	4.1	5.1	8.32	2
4	W173200074200001	DW	Aundh	10.1	6.2	10.5	5.8	10.22	4.7	7.4	8	13.14	6.1
5	W173400074310001	DW	Katar Khatav	10.25	5	9.5	2.4	10.2	2.9	7	6.6	10.24	3.9
6	W173800074470001	DW	Mhaswad	7.7	8.15	5.5	4.2	14.4	3.85	10.1	9.2	16.52	
7	W173900074310001	DW	Pingli	8.6	3.85	8.6	0.8		1	7.2	5	11.74	1
8	W174030074360001	DW	Gondavale Bk.										
9	W174226074330501	DW	Dahivadi	5.1	3.5	3.05	2.55	5.7	2.15	2.6		4.1	
10	W174300074190001	DW	Pusegaon										
11	W174427074414901	DW	Mardi	6		10	1.4	8.23	1	5.1	2.2	10	
12	W174609074195101	DW	Budh		3.55	9.8	4.3	10	4	5	6.1	10	3.45
13	W174704074361501	DW	Wavarhire-1	8.3	3.6	10	2.7	10	2.2	4.3	3.9	10	2.65
14	W175015074161001	DW	Manjarvadi (Mol)	3.9	0.4	9	0.5	4.95	0.6	1	2.8	7.3	2.2
15	W175100073570001	DW	Udtara										
16	W175700073540001	DW	Wai	3.8	3.4	5.2	2.4	4.2	2		3.4	2.4	2.65
17	W175800073590001	DW	Surur	14	7.1	17	8.9		7.5		9	21.5	4.7

Note:

Type of well: **DW** (Dug well); **BW** (Bore well - hard rock); **TW** (Tube well - soft rock); **PZ** (Piezometer)

TABLE-03- Continued

WATER QUALITY (WQ) DATA OF MONITORING STATIONS-SGWD																		
STATE-MAHARASHTRA, DISTRICT-SATARA, TALUKA-KHATAV																		
Sr. No.	Name of Village	Type of Source	Year	Sample Testing Date	Temp	pH	EC	TDS (mg/L)	Alkalinity (mg/L)	Chloride (mg/L)	Fluoride (mg/L)	Nitrate (mg/L)	Sulphate (mg/L)	Total Hardness (mg/L)	Iron (mg/L)	Ca (mg/L)	Mg (mg/L)	Remark
1	AMBAVADE	OPEN WELL	16-17	6.27.2016	R.T.	8	NA	458	148	122	0.68	34.94	4.13	174	0.08	NA	NA	FIT
2	AMBAVADE	HAND PUMP	16-17	6.27.2016	R.T.	8	NA	449	156	124	0.58	32.49	4.12	184	0.07	NA	NA	FIT
3	AMBAVADE	HAND PUMP	16-17	7.9.2016	R.T.	8	NA	468	168	132	0.68	36.99	2.99	166	0.078	NA	NA	FIT
4	AMBAVADE	HAND PUMP	17-18	16.8.2017	R.T.	8	2063	1320	240	276	1.32	73.19	1.079	582	0.089	NA	NA	UNFIT
5	AMBAVADE	BORE WELL	17-18	14.08.2017	R.T.	8	734.4	470	144	166	0.71	32.01	1.12	190	0.069	NA	NA	FIT
6	AMBAVADE	HAND PUMP	17-18	14.08.2017	R.T.	8	796.9	510	146	168	0.66	34.19	0.96	194	0.072	NA	NA	FIT
7	AMBAVADE	Dug Well	18-19	02.07.2018	R.T.	7	NA	1096	340	360	0.7	83.45	24.4	732	0.59	NA	NA	UNFIT
8	AMBAVADE	OPEN WELL	18-19	25.6.2018	R.T.	8	NA	274	110	92	0.64	17.38	2.3	134	0.07	NA	NA	FIT
9	AMBAVADE	HAND PUMP	18-19	25.6.2018	R.T.	8	NA	279	104	90	0.36	17.45	2.77	130	0.06	NA	NA	UNFIT
10	AMBAVADE	BORE WELL	18-19	25.6.2018	R.T.	8	NA	279	104	90	0.36	17.45	2.77	130	0.06	NA	NA	UNFIT
11	AMBAVADE	OPEN WELL	18-19	11.01.2018	R.T.	8	NA	438	114	138	0.22	19.13	0.94	190	0.037	NA	NA	FIT
12	AMBAVADE	HAND PUMP	18-19	11.01.2018	R.T.	8	NA	445	116	136	0.18	19.46	0.69	186	0.034	NA	NA	FIT
13	AMBAVADE	BORE WELL	18-19	11.01.2018	R.T.	8	NA	436	118	138	0.32	19.22	0.88	190	0.036	NA	NA	FIT
14	AMBAVADE	Dug Well	19-20	26.07.2019	R.T.	8	350	224	156	60	0.09	21.28	0.6	132	0.01	NA	NA	FIT
15	AMBAVADE	OPEN WELL	19-20	14.06.2019	R.T.	8	1047	670	210	210	0.48	23.07	1.12	224	0.057	NA	NA	FIT
16	AMBAVADE	BORE WELL	19-20	14.06.2019	R.T.	8	1094	700	294	300	0.62	26.08	2.32	312	0.048	NA	NA	FIT
17	AMBAVADE	HAND PUMP	19-20	15.06.2019	R.T.	8	984.4	630	232	240	0.79	24.1	2.16	226	0.089	NA	NA	FIT
18	AMBAVADE	BORE WELL	19-20	15.06.2019	R.T.	8	1031	660	212	232	0.82	27.08	1.6	220	0.087	NA	NA	FIT
19	AMBAVADE	HAND PUMP	19-20	26.11.2019	R.T.	8	681.3	436	118	136	0.29	28.65	0.94	186	0.033	NA	NA	FIT
20	AMBAVADE	OPEN WELL	19-20	26.11.2019	R.T.	8	689.1	441	118	136	0.35	19.93	0.76	186	0.041	NA	NA	FIT
21	AMBAVADE	HAND PUMP	19-20	26.11.2019	R.T.	8	685.9	439	118	134	0.37	19.21	0.93	184	0.036	NA	NA	FIT
22	AUNDH	BORE WELL	16-17	7.9.2016	R.T.	8	NA	337	156	114	0.48	27.27	2.63	176	0.072	NA	NA	FIT
23	AUNDH	OPEN WELL	16-17	7.9.2016	R.T.	8	NA	312	140	100	0.44	29.65	1.25	144	0.055	NA	NA	FIT
24	AUNDH	OPEN WELL	16-17	13.12.16	R.T.	8	NA	455	150	144	0.49	30.31	2.14	240	0.054	NA	NA	FIT
25	AUNDH	Dug Well	18-19	02.07.2018	R.T.	8	NA	275	180	28	0.56	23.19	0.16	180	0.87	NA	NA	FIT
26	AUNDH	OPEN WELL	18-19	16.5.2018	R.T.	8	NA	225	82	48	0.32	14.43	1.78	138	0.035	NA	NA	FIT
27	AUNDH	HAND PUMP	18-19	16.5.2018	R.T.	8	NA	301	110	108	0.77	43.78	2.33	122	0.051	NA	NA	FIT

Atal Bhujal Yojana - Block Hydrogeological Report

28	AUNDH	OPEN WELL	18-19	17.5.2018	R.T.	8	NA	412	174	116	1.06	43.1	3	188	0.07	NA	NA	FIT
29	AUNDH	OPEN WELL	18-19	17.5.2018	R.T.	8	NA	441	156	128	0.27	40.52	1.15	176	0.08	NA	NA	FIT
30	AUNDH	HAND PUMP	18-19	08.03.2018	R.T.	8	NA	750	234	220	0.25	27.76	4.52	374	0.03	NA	NA	FIT
31	AUNDH	OPEN WELL	18-19	08.03.2018	R.T.	8	NA	292	120	96	0.34	5.26	1.45	162	0.02	NA	NA	FIT
32	AUNDH	HAND PUMP	18-19	27.10.2018	R.T.	8	NA	543	138	146	0.35	31.15	1.25	218	0.033	NA	NA	FIT
33	AUNDH	OPEN WELL	18-19	27.10.2018	R.T.	8	NA	542	132	150	0.23	31.41	1.25	230	0.034	NA	NA	FIT
34	AUNDH	Dug Well	19-20	26.07.2019	R.T.	8	273.4	175	120	44	0.08	10.22	0.43	112	0.03	NA	NA	FIT
35	AUNDH	OPEN WELL	19-20	20.04.2019	R.T.	8	921.9	590	196	190	0.67	37.18	1.02	190	0.052	NA	NA	FIT
36	AUNDH	HAND PUMP	19-20	20.04.2019	R.T.	8	843.8	540	190	170	0.9	30.17	2.1	170	0.077	NA	NA	FIT
37	AUNDH	OPEN WELL	19-20	22.04.2019	R.T.	8	921.9	590	172	168	0.41	17.01	1.5	190	0.081	NA	NA	FIT
38	AUNDH	OPEN WELL	19-20	12.12.2019	R.T.	8	1066	682	226	202	0.51	38	2.68	232	0.061	NA	NA	FIT
39	AUNDH	OPEN WELL	19-20	13.12.2019	R.T.	8	957.8	613	175	78	0.58	31.17	3.12	410	0.05	NA	NA	FIT
40	AUNDH	HAND PUMP	19-20	13.12.2019	R.T.	8	800	512	157	173	0.63	32.19	2.2	262	0.09	NA	NA	FIT
41	BHUSHANGAD	DEEPTUBEWELL	16-17	30.09.2016	R.T.	8	648.4	415	112	40	0.223	33.509	2.76	220	0.09	NA	NA	FIT
42	BHUSHANGAD	OPEN WELL	16-17	6.27.2016	R.T.	8	NA	237	98	64	0.46	18.25	1.33	136	0.1	NA	NA	UNFIT
43	BHUSHANGAD	HAND PUMP	16-17	6.27.2016	R.T.	8	NA	462	148	120	0.88	41.85	4.56	174	0.09	NA	NA	FIT
44	BHUSHANGAD	HAND PUMP	16-17	7.9.2016	R.T.	8	NA	373	152	120	0.69	32.45	2.36	168	0.071	NA	NA	FIT
45	BHUSHANGAD	Dug Well	18-19	30.01.2019	R.T.	8	NA	202	72	40	0.006	6.069	5.288	160	0.081	NA	NA	FIT
46	BHUSHANGAD	HAND PUMP	18-19	30.05.2018	R.T.	8	NA	394	156	32	0.07	12.84	0.39	184	0.02	NA	NA	FIT
47	BHUSHANGAD	Dug Well	18-19	02.07.2018	R.T.	8	NA	265	140	24	0.77	1.69	0.63	196	0.02	NA	NA	FIT
48	BHUSHANGAD	OPEN WELL	18-19	11.12.2018	R.T.	8	NA	433	114	134	0.36	19.34	0.91	186	0.021	NA	NA	FIT
49	BHUSHANGAD	HAND PUMP	18-19	11.12.2018	R.T.	8	NA	438	118	134	0.28	19.38	0.86	186	0.037	NA	NA	FIT
50	BHUSHANGAD	Dug Well	19-20	26.07.2019	R.T.	8	317.2	203	164	56	0.09	6.67	0.21	140	0.04	NA	NA	FIT
51	BHUSHANGAD	OPEN WELL	19-20	27.05.2019	R.T.	8	1016	650	190	160	0.42	24	1.18	200	0.032	NA	NA	FIT
52	BHUSHANGAD	HAND PUMP	19-20	27.05.2019	R.T.	8	921.9	590	200	180	0.8	23	1.1	210	0.053	NA	NA	FIT
53	BHUSHANGAD	HAND PUMP	19-20	27.05.2019	R.T.	8	937.5	600	200	190	0.53	28	2.1	210	0.062	NA	NA	FIT
54	BHUSHANGAD	HAND PUMP	19-20	27.05.2019	R.T.	8	906.3	580	180	160	0.42	39.2	1.8	190	0.081	NA	NA	FIT
55	BUDH	DEEPTUBEWELL	16-17	30.09.2016	R.T.	8	85.94	55	20	20	0.192	16.285	1.07	4	0.11	NA	NA	FIT
56	BUDH	DEEPTUBEWELL	16-17	22.11.2016	R.T.	7	1328	850	204	96	0.66	24.33	0.79	480	0.18	NA	NA	FIT
57	BUDH	HAND PUMP	16-17	5.31.2016	R.T.	8	NA	290	110	80	0.83	14.74	2.98	150	0.07	NA	NA	FIT

Atal Bhujal Yojana - Block Hydrogeological Report

58	BUDH	HAND PUMP	16-17	7.9.2016	R.T.	8	NA	813	256	248	0.78	66.78	3.21	414	0.098	NA	NA	UNFIT
59	BUDH	HAND PUMP	16-17	16.12.16	R.T.	8	NA	813	230	240	0.91	76.83	4.78	418	0.079	NA	NA	UNFIT
60	BUDH	OPEN WELL	16-17	16.12.16	R.T.	8	NA	654	164	160	0.78	54.18	3.31	280	0.065	NA	NA	UNFIT
61	BUDH	HAND PUMP	16-17	17.12.16	R.T.	7	NA	1240	232	240	0.99	83.41	6.01	518	0.39	NA	NA	UNFIT
62	BUDH	HAND PUMP	17-18	14.8.2017	R.T.	8	2078	1330	300	310	0.81	78.85	0.45	618	0.345	NA	NA	UNFIT
63	BUDH	BORE WELL	17-18	14.8.2017	R.T.	8	779.7	499	166	100	0.19	27.18	0.63	240	0.049	NA	NA	FIT
64	BUDH	OPEN WELL	17-18	14.8.2017	R.T.	8	690.6	442	288	98	0.76	21.83	0.89	198	0.061	NA	NA	FIT
65	BUDH	HAND PUMP	17-18	28.2.2018	R.T.	8	607.8	389	130	116	0.55	26.45	0.89	210	0.052	NA	NA	UNFIT
66	BUDH	OPEN WELL	17-18	28.2.2018	R.T.	8	742.2	475	146	126	0.59	31.26	1.33	140	0.056	NA	NA	FIT
67	BUDH	Dug Well	18-19	30.01.2019	R.T.	8	NA	334	88	60	0.011	79.54	5.288	192	0.076	NA	NA	UNFIT
68	BUDH	Dug Well	18-19	02.07.2018	R.T.	8	NA	502	200	132	1.05	89.99	0.14	312	0.04	NA	NA	UNFIT
69	BUDH	HAND PUMP	18-19	26.6.2018	R.T.	7	NA	439	116	112	0.61	33.75	1.18	172	0.063	NA	NA	FIT
70	BUDH	OPEN WELL	18-19	26.6.2018	R.T.	7	NA	319	112	100	0.46	20.28	0.48	152	0.069	NA	NA	FIT
71	BUDH	HAND PUMP	18-19	15.10.2018	R.T.	8	NA	638	118	130	0.34	25.31	1.05	212	1.09	NA	NA	UNFIT
72	BUDH	BORE WELL	18-19	15.10.2018	R.T.	8	NA	843	174	200	0.42	53.42	1	324	0.063	NA	NA	UNFIT
73	BUDH	OPEN WELL	18-19	15.10.2018	R.T.	8	NA	510	132	142	0.38	31.11	0.79	192	0.056	NA	NA	FIT
74	BUDH	OPEN WELL	18-19	15.1.2019	R.T.	8	NA	436	58	56	0.72	16.72	1.9	210	0.116	NA	NA	FIT
75	BUDH	HAND PUMP	18-19	29.03.2019	R.T.	8	1059	550	190	178	0.35	15.9	0.35	190	0.09	NA	NA	FIT
76	BUDH	BORE WELL	18-19	29.03.2019	R.T.	8	875	375	160	150	0.3	17.7	0.3	200	0.047	NA	NA	FIT
77	BUDH	OPEN WELL	18-19	29.03.2019	R.T.	8	986	470	150	96	0.25	16.8	1.14	200	0.051	NA	NA	FIT
78	BUDH	Dug Well	19-20	26.07.2019	R.T.	8	381.3	244	192	52	0.1	25.17	0.57	164	0.07	NA	NA	FIT
79	BUDH	BORE WELL	19-20	19.10.2019	R.T.	7	625	400	114	122	0.6	29.27	0.95	200	0.07	NA	NA	FIT
80	BUDH	OPEN WELL	19-20	25.10.2019	R.T.	8	685.9	439	116	112	0.61	29.27	1.18	172	0.063	NA	NA	FIT
81	CHITALI	DEEPTUBEWELL	16-17	30.09.2016	R.T.	8	875	560	80	80	0.267	52.9	6.65	220	0.45	NA	NA	UNFIT
82	CHITALI	DEEPTUBEWELL	16-17	22.11.2016	R.T.	8	1483	949	100	200	0.263	92.2	0.25	336	0.17	NA	NA	UNFIT
83	CHITALI	HAND PUMP	16-17	8.2.2016	R.T.	8	NA	552	140	132	0.56	44.68	3.8	212	0.05	NA	NA	FIT
84	CHITALI	OPEN WELL	16-17	8.2.2016	R.T.	8	NA	228	68	50	0.53	28.28	1.09	110	0.03	NA	NA	FIT
85	CHITALI	HAND PUMP	16-17	3.9.2016	R.T.	8	NA	630	188	148	0.81	40.15	3.46	252	0.078	NA	NA	FIT
86	CHITALI	HAND PUMP	17-18	25.9.2017	R.T.	8	510.9	327	148	60	0.89	26.16	0.48	166	0.035	NA	NA	FIT
87	CHITALI	OPEN WELL	17-18	25.9.2017	R.T.	8	798.4	511	212	150	0.45	39.42	0.61	230	0.093	NA	NA	FIT
88	CHITALI	HAND PUMP	17-18	25.9.2017	R.T.	8	662.5	424	200	100	0.33	29.68	0.39	182	0.112	NA	NA	FIT
89	CHITALI	BORE WELL	17-18	25.9.2017	R.T.	8	1408	901	182	218	1.05	68.56	1.4	390	0.28	NA	NA	UNFIT
90	CHITALI	HAND PUMP	17-18	25.9.2017	R.T.	8	1359	870	170	192	0.98	63.58	1.34	510	0.27	NA	NA	UNFIT

Atal Bhujal Yojana - Block Hydrogeological Report

91	CHITALI	Dug Well	18-19	30.01.2019	R.T.	8	NA	160	52	24	0.026	4.208	2.967	72	0.071	NA	NA	FIT
92	CHITALI	Dug Well	18-19	02.07.2018	R.T.	10	NA	1296	224	320	0.88	84.09	21.57	580	0.07	NA	NA	UNFIT
93	CHITALI	HAND PUMP	18-19	19.4.2018	R.T.	7	NA	298	96	84	0.41	40.12	2.13	114	0.075	NA	NA	FIT
94	CHITALI	HAND PUMP	18-19	20.4.2018	R.T.	7	NA	303	96	86	0.51	40	2.03	118	0.075	NA	NA	FIT
95	CHITALI	OPEN WELL	18-19	20.4.2018	R.T.	7	NA	304	96	80	0.52	39.4	2.03	120	0.075	NA	NA	FIT
96	CHITALI	OPEN WELL	18-19	14.8.2018	R.T.	8	NA	533	196	168	0.49	35.06	1.23	234	0.12	NA	NA	FIT
97	CHITALI	HAND PUMP	18-19	14.8.2018	R.T.	8	NA	401	138	120	0.36	18.14	1.5	194	0.056	NA	NA	FIT
98	CHITALI	OPEN WELL	18-19	30.1.2019	R.T.	8	NA	410	180	110	0.3	25.12	0.7	210	0.033	NA	NA	FIT
99	CHITALI	HAND PUMP	18-19	30.1.2019	R.T.	8	NA	430	160	190	0.38	29.16	1.6	230	0.058	NA	NA	FIT
100	CHITALI	HAND PUMP	18-19	31.1.2019	R.T.	8	NA	430	140	190	0.43	29.83	1.14	200	0.035	NA	NA	FIT
101	CHITALI	OPEN WELL	18-19	31.1.2019	R.T.	8	NA	470	80	180	0.63	16.51	0.78	110	0.056	NA	NA	FIT
102	CHITALI	OPEN WELL	18-19	02.12.2019	R.T.	7	956	515	160	210	0.54	47.13	2.1	260	0.09	NA	NA	UNFIT
103	CHITALI	Dug Well	19-20	26.07.2019	R.T.	8	320.3	205	156	48	0.12	6.67	0.94	136	0.05	NA	NA	FIT
104	CHITALI	HAND PUMP	19-20	23.04.2019	R.T.	8	968.8	620	130	0.18	0.63	38.08	1.96	180	0.063	NA	NA	FIT
105	CHITALI	OPEN WELL	19-20	23.04.2019	R.T.	8	765.6	490	160	170	0.3	30.1	3.4	170	0.079	NA	NA	FIT
106	CHITALI	HAND PUMP	19-20	23.04.2019	R.T.	8	765.6	490	160	170	0.3	30.1	3.4	170	0.079	NA	NA	FIT
107	CHITALI	HAND PUMP	19-20	23.04.2019	R.T.	7	843.8	540	120	120	0.15	19.1	1.09	130	0.036	NA	NA	FIT
108	CHITALI	BORE WELL	19-20	23.04.2019	R.T.	7	875	560	210	190	0.14	19.08	1.2	220	0.042	NA	NA	FIT
109	CHITALI	BORE WELL	19-20	23.04.2019	R.T.	8	828.1	530	160	160	0.31	19.18	2.12	170	0.051	NA	NA	FIT
110	CHITALI	HAND PUMP	19-20	23.04.2019	R.T.	8	984.4	630	210	200	0.36	21.06	2.8	220	0.062	NA	NA	FIT
111	CHITALI	OPEN WELL	19-20	23.04.2019	R.T.	8	1616	1034	210	170	0.43	58.95	1.9	620	0.03	NA	NA	UNFIT
112	CHITALI	HAND PUMP	19-20	23.04.2019	R.T.	8	937.5	600	190	200	0.58	27	1.83	200	0.05	NA	NA	FIT
113	CHITALI	HAND PUMP	19-20	23.04.2019	R.T.	8	984.4	630	210	200	0.62	23.01	1.92	210	0.062	NA	NA	FIT
114	CHITALI	HAND PUMP	19-20	23.04.2019	R.T.	8	890.6	570	190	220	0.76	26.01	1.8	220	0.081	NA	NA	FIT
115	CHITALI	HAND PUMP	19-20	23.04.2019	R.T.	8	1091	698	190	200	0.63	51.36	1.91	240	0.99	NA	NA	UNFIT
116	CHITALI	HAND PUMP	19-20	24.04.2019	R.T.	8	968.8	620	210	200	0.68	49.88	1.92	200	0.042	NA	NA	UNFIT
117	CHITALI	OPEN WELL	19-20	24.04.2019	R.T.	8	906.3	580	190	190	0.7	37.08	2.4	240	0.063	NA	NA	FIT
118	CHITALI	BORE WELL	19-20	25.04.2019	R.T.	8	1109	710	152	152	0.41	28.1	1.92	160	0.053	NA	NA	FIT
119	CHITALI	HAND PUMP	19-20	07.12.2019	R.T.	8	873.4	559	132	136	0.41	28.36	0.97	246	0.08	NA	NA	FIT
120	CHITALI	HAND PUMP	19-20	07.12.2019	R.T.	8	556.3	356	112	110	0.7	24.15	1	200	0.093	NA	NA	FIT

Atal Bhujal Yojana - Block Hydrogeological Report

121	CHITALI	OPEN WELL	19-20	07.12.2019	R.T.	8	420.3	269	72	88	0.55	11.96	0.5	130	0.09	NA	NA	FIT
122	CHITALI	HAND PUMP	19-20	07.12.2019	R.T.	8	846.9	542	138	144	0.7	37.25	0.8	170	0.068	NA	NA	FIT
123	CHITALI	HAND PUMP	19-20	07.12.2019	R.T.	8	681.3	436	126	130	0.6	31.44	0.76	166	0.076	NA	NA	FIT
124	CHITALI	HAND PUMP	19-20	07.12.2019	R.T.	8	556.3	356	108	100	0.69	32.17	0.74	170	0.07	NA	NA	FIT
125	CHITALI	OPEN WELL	19-20	07.12.2019	R.T.	8	707.8	453	180	168	0.9	32.09	0.74	200	0.063	NA	NA	FIT
126	CHITALI	HAND PUMP	19-20	07.12.2019	R.T.	8	687.5	440	240	90	0.26	30.15	0.68	144	0.033	NA	NA	FIT
127	CHITALI	HAND PUMP	19-20	07.12.2019	R.T.	8	956.3	612	90	92	0.6	42.36	1.6	130	0.09	NA	NA	FIT
128	CHITALI	HAND PUMP	19-20	07.12.2019	R.T.	8	859.4	550	90	106	0.37	36.46	1.6	120	0.07	NA	NA	FIT
129	CHITALI	HAND PUMP	19-20	07.12.2019	R.T.	8	671.9	430	134	154	0.43	18.48	1.6	166	0.06	NA	NA	FIT
130	CHITALI	HAND PUMP	19-20	07.12.2019	R.T.	7	520.3	333	136	80	0.4	19.1	1.07	250	0.083	NA	NA	FIT
131	CHITALI	HAND PUMP	19-20	07.12.2019	R.T.	8	1117	715	140	200	0.63	30.13	2.1	110	0.043	NA	NA	FIT
132	CHITALI	HAND PUMP	19-20	07.12.2019	R.T.	8	1000	640	140	188	0.6	14.19	1.78	200	0.08	NA	NA	FIT
133	CHITALI	HAND PUMP	19-20	07.12.2019	R.T.	8	1138	728	130	212	0.54	14.2	1.93	142	0.04	NA	NA	FIT
134	CHITALI	HAND PUMP	19-20	07.12.2019	R.T.	8	1000	640	142	192	0.55	14.21	2.86	130	0.06	NA	NA	FIT
135	CHITALI	HAND PUMP	19-20	09.12.2019	R.T.	8	823.4	527	130	144	0.67	20.19	2.9	150	0.07	NA	NA	FIT
136	CHITALI	OPEN WELL	19-20	09.12.2019	R.T.	8	681.3	436	132	156	0.71	20.17	4.98	168	0.26	NA	NA	FIT
137	CHITALI	OPEN WELL	19-20	09.12.2019	R.T.	8	378.1	242	90	98	0.2	30.18	0.79	130	0.05	NA	NA	FIT
138	DATEWADI	DEEPTUBEWELL	16-17	30.09.2016	R.T.	7	1756	1124	272	156	0.277	92.37	2.12	552	0.07	NA	NA	UNFIT
139	DATEWADI	DEEPTUBEWELL	16-17	22.11.2016	R.T.	7	526.6	337	80	76	0.088	36.48	0.524	160	0.18	NA	NA	FIT
140	DATEWADI	HAND PUMP	16-17	6.14.2016	R.T.	8	NA	480	192	178	0.8	28.49	2.16	218	0.09	NA	NA	FIT
141	DATEWADI	BORE WELL	16-17	4.10.2016	R.T.	8	NA	1040	262	242	0.56	55.68	3.65	342	0.22	NA	NA	UNFIT
142	DATEWADI	HAND PUMP	17-18	09.01.2017	R.T.	8	495.3	317	156	50	0.57	28.28	0.34	168	0.108	NA	NA	FIT
143	DATEWADI	OPEN WELL	17-18	09.01.2017	R.T.	8	543.8	348	158	112	0.22	11.98	0.56	178	0.131	NA	NA	FIT
144	DATEWADI	Dug Well	18-19	30.01.2019	R.T.	8	NA	311	84	48	0.006	1.719	1.946	128	0.071	NA	NA	FIT
145	DATEWADI	Dug Well	18-19	02.07.2018	R.T.	8	NA	535	260	132	0.9	12.78	0.76	280	0.09	NA	NA	FIT
146	DATEWADI	HAND PUMP	18-19	21.6.2018	R.T.	8	NA	420	220	170	0.46	20.13	2.78	210	0.03	NA	NA	FIT
147	DATEWADI	OPEN WELL	18-19	21.6.2018	R.T.	8	NA	280	100	74	0.77	13.3	1.7	118	0.05	NA	NA	FIT
148	DATEWADI	OPEN WELL	18-19	30.10.2018	R.T.	8	NA	380	108	96	0.32	23.22	0.89	154	0.031	NA	NA	FIT
149	DATEWADI	Dug Well	19-20	26.07.2019	R.T.	8	379.7	243	172	64	0.11	23.45	0.42	156	0.03	NA	NA	FIT
150	DATEWADI	OPEN WELL	19-20	15.04.2019	R.T.	8	984.4	630	130	190	0.6	30.17	2.4	200	0.76	NA	NA	FIT

Atal Bhujal Yojana - Block Hydrogeological Report

151	DATEWADI	HAND PUMP	19-20	15.04.2019	R.T.	8	1063	680	190	200	0.5	31.17	3.4	200	0.078	NA	NA	FIT
152	DATEWADI	HAND PUMP	19-20	23.10.2019	R.T.	8	1041	666	100	96	0.32	26.59	0.29	172	0.046	NA	NA	FIT
153	DATEWADI	OPEN WELL	19-20	23.10.2019	R.T.	8	471.9	302	120	198	0.31	25.3	0.29	210	0.006	NA	NA	FIT
154	DATEWADI	HAND PUMP	19-20	23.10.2019	R.T.	8	471.9	302	120	198	0.31	25.3	0.29	210	0.006	NA	NA	FIT
155	DATEWADI	OPEN WELL	19-20	23.10.2019	R.T.	7	695.3	445	118	110	0.46	12.65	2.78	160	0.006	NA	NA	FIT
156	DATEWADI	HAND PUMP	19-20	23.10.2019	R.T.	7	695.3	445	118	110	0.46	12.65	2.78	160	0.006	NA	NA	FIT
157	KATARKHATAV	DEEPTUBEWELL	16-17	30.09.2016	R.T.	7	875	560	144	76	0.31	42.2	0.43	300	0.1	NA	NA	FIT
158	KATARKHATAV	DEEPTUBEWELL	16-17	22.11.2016	R.T.	7	1627	1041	180	180	0.037	91.85	1.52	560	0.17	NA	NA	UNFIT
159	KATARKHATAV	HAND PUMP	16-17	5.25.2016	R.T.	8	NA	364	124	86	0.27	35.36	1.78	124	0.05	NA	NA	FIT
160	KATARKHATAV	BORE WELL	16-17	6.7.2016	R.T.	8	NA	853	240	166	0.79	81.34	4.94	358	0.09	NA	NA	UNFIT
161	KATARKHATAV	BORE WELL	16-17	6.10.2016	R.T.	8	NA	845	172	168	0.76	43.32	5.35	240	0.09	NA	NA	FIT
162	KATARKHATAV	HAND PUMP	16-17	6.10.2016	R.T.	8	NA	720	218	212	0.68	44.01	3.12	390	0.06	NA	NA	FIT
163	KATARKHATAV	HAND PUMP	16-17	6.24.2016	R.T.	8	NA	853	318	286	0.92	44.01	12.73	344	0.14	NA	NA	FIT
164	KATARKHATAV	HAND PUMP	16-17	4.10.2016	R.T.	7	NA	386	134	118	0.45	34.47	2.08	176	0.085	NA	NA	FIT
165	KATARKHATAV	BORE WELL	17-18	11.04.2017	R.T.	7	389.1	249	94	86	0.43	29.42	0.69	138	0.091	NA	NA	FIT
166	KATARKHATAV	HAND PUMP	17-18	19.8.2017	R.T.	8	756.3	484	214	122	0.45	37.19	1.12	208	0.076	NA	NA	UNFIT
167	KATARKHATAV	HAND PUMP	17-18	22.8.2017	R.T.	8	1200	768	168	200	0.63	51.65	2.17	388	0.067	NA	NA	UNFIT
168	KATARKHATAV	OPEN WELL	17-18	22.8.2017	R.T.	8	815.6	522	282	86	0.25	26.17	1.26	280	0.084	NA	NA	FIT
169	KATARKHATAV	HAND PUMP	17-18	22.8.2017	R.T.	8	1069	684	268	100	0.31	40.13	1.12	400	0.01	NA	NA	FIT
170	KATARKHATAV	HAND PUMP	17-18	30.05.2017	R.T.	8	609.4	390	130	138	0.45	32.18	0.37	160	0.041	NA	NA	FIT
171	KATARKHATAV	HAND PUMP	17-18	06.03.2017	R.T.	8	798.4	511	124	138	0.41	41.13	0.43	166	0.043	NA	NA	FIT
172	KATARKHATAV	HAND PUMP	17-18	09.12.2017	R.T.	8	482.8	309	192	48	0.27	23.17	0.46	218	0.024	NA	NA	FIT
173	KATARKHATAV	HAND PUMP	17-18	09.12.2017	R.T.	8	482.8	309	192	48	0.27	23.17	0.46	218	0.024	NA	NA	FIT
174	KATARKHATAV	HAND PUMP	17-18	30.05.2017	R.T.	8	553.1	354	120	120	0.57	31.93	0.4	170	0.051	NA	NA	FIT
175	KATARKHATAV	HAND PUMP	17-18	06.03.2017	R.T.	8	373.4	239	80	68	0.24	26.73	0.38	110	0.05	NA	NA	FIT
176	KATARKHATAV	Dug Well	18-19	30.01.2019	R.T.	8	NA	320	88	48	0.006	0.346	4.081	128	0.076	NA	NA	FIT
177	KATARKHATAV	Dug Well	18-19	03.07.2018	R.T.	8	NA	479	156	120	0.41	8.07	6.74	320	0.05	NA	NA	FIT
178	KATARKHATAV	HAND PUMP	18-19	04.11.2018	R.T.	8	NA	599	152	192	0.12	0.71	0.59	160	0.065	NA	NA	FIT
179	KATARKHATAV	OPEN WELL	18-19	04.09.2018	R.T.	8	NA	1050	216	230	0.78	49.89	2.35	326	0.15	NA	NA	UNFIT
180	KATARKHATAV	HAND PUMP	18-19	04.09.2018	R.T.	8	NA	588	148	152	0.64	12.13	1.9	208	0.05	NA	NA	FIT
181	KATARKHATAV	HAND PUMP	18-19	04.10.2018	R.T.	8	NA	971	136	294	1.12	42.35	1.04	512	0.145	NA	NA	FIT

Atal Bhujal Yojana - Block Hydrogeological Report

182	KATARKHATAV	HAND PUMP	18-19	19.6.2018	R.T.	8	NA	420	220	170	0.46	20.13	2.78	210	0.03	NA	NA	FIT
183	KATARKHATAV	BORE WELL	18-19	23.1.2019	R.T.	8	NA	466	125	132	0.61	41	0.51	150	0.086	NA	NA	FIT
184	KATARKHATAV	HAND PUMP	18-19	25.1.2019	R.T.	8	NA	270	86	81	0.21	12.17	0.77	120	0.046	NA	NA	FIT
185	KATARKHATAV	HAND PUMP	18-19	28.1.2019	R.T.	8	NA	570	150	182	0.46	29.13	3.39	242	0.05	NA	NA	FIT
186	KATARKHATAV	Dug Well	19-20	26.07.2019	R.T.	8	512.5	328	280	84	0.31	33.97	0.33	236	0.02	NA	NA	FIT
187	KATARKHATAV	HAND PUMP	19-20	18.04.2019	R.T.	8	765.6	490	110	100	0.1	20.1	1.08	130	0.03	NA	NA	FIT
188	KATARKHATAV	BORE WELL	19-20	18.04.2019	R.T.	7	906.3	580	190	180	0.33	19	1.1	180	0.06	NA	NA	FIT
189	KATARKHATAV	HAND PUMP	19-20	13.06.2019	R.T.	8	843.8	540	176	170	0.58	17.1	2.16	170	0.02	NA	NA	FIT
190	KATARKHATAV	HAND PUMP	19-20	14.06.2019	R.T.	8	875	560	166	156	0.2	17.8	1.79	160	0.021	NA	NA	FIT
191	KATARKHATAV	HAND PUMP	19-20	14.06.2019	R.T.	8	875	560	132	140	0.12	18.13	2.13	142	0.035	NA	NA	FIT
192	KATARKHATAV	HAND PUMP	19-20	25.10.2019	R.T.	8	1398	895	172	168	0.76	20.13	4.14	240	0.09	NA	NA	FIT
193	KATARKHATAV	HAND PUMP	19-20	30.10.2019	R.T.	8	460.9	295	100	74	0.77	23.26	1.7	118	0.05	NA	NA	FIT
194	KATARKHATAV	BORE WELL	19-20	04.11.2019	R.T.	8	414.1	265	76	62	0.35	7.29	2.2	108	0.01	NA	NA	FIT
195	KOKARALE	HAND PUMP	16-17	8.12.2016	R.T.	7	NA	501	218	160	0.73	41.37	3.19	262	0.059	NA	NA	FIT
196	KOKARALE	OPEN WELL	16-17	8.12.2016	R.T.	7	NA	481	170	172	0.39	39.41	1.32	230	0.049	NA	NA	FIT
197	KOKARALE	BORE WELL	16-17	8.12.2016	R.T.	7	NA	463	144	132	0.38	31.55	1.07	230	0.057	NA	NA	FIT
198	KOKARALE	Dug Well	18-19	30.01.2019	R.T.	8	NA	225	52	32	0.016	7.07	2.503	84	0.067	NA	NA	FIT
199	KOKARALE	HAND PUMP	18-19	30.05.2018	R.T.	7	NA	355	128	52	0.05	41.9	0.45	290	0.02	NA	NA	FIT
200	KOKARALE	Dug Well	18-19	03.07.2018	R.T.	8	NA	462	244	88	0.91	31.21	0.8	372	1.76	NA	NA	UNFIT
201	KOKARALE	HAND PUMP	18-19	16.5.2018	R.T.	8	NA	428	180	128	0.8	47.69	3.15	186	0.079	NA	NA	UNFIT
202	KOKARALE	BORE WELL	18-19	08.02.2018	R.T.	8	NA	750	234	220	0.25	27.76	4.52	374	0.03	NA	NA	FIT
203	KOKARALE	BORE WELL	18-19	26.10.2018	R.T.	8	NA	303	94	90	0.29	18.21	0.65	150	0.04	NA	NA	FIT
204	KOKARALE	HAND PUMP	18-19	26.10.2018	R.T.	8	NA	394	108	98	0.33	22.81	1	180	0.049	NA	NA	FIT
205	KOKARALE	OPEN WELL	18-19	26.10.2018	R.T.	8	NA	394	108	98	0.34	22.78	0.91	180	0.044	NA	NA	FIT
206	KOKARALE	HAND PUMP	18-19	02.06.2019	R.T.	8	844	480	132	150	0.77	30.9	1.92	180	0.091	NA	NA	FIT
207	KOKARALE	OPEN WELL	18-19	02.06.2019	R.T.	8	1056	492	195	150	0.32	30.5	1.4	195	0.071	NA	NA	FIT
208	KOKARALE	Dug Well	19-20	26.07.2019	R.T.	8	235.9	151	120	36	0.08	21.76	0.88	100	0.03	NA	NA	FIT
209	KOKARALE	OPEN WELL	19-20	22.04.2019	R.T.	8	859.4	550	280	216	0.45	22.08	1.14	288	0.033	NA	NA	FIT
210	KOKARALE	OPEN WELL	19-20	22.04.2019	R.T.	8	796.9	510	210	192	0.72	27.1	1.8	216	0.065	NA	NA	FIT

Atal Bhujal Yojana - Block Hydrogeological Report

211	KOKARALE	HAND PUMP	19-20	17.12.2019	R.T.	7	782.8	501	110	118	0.59	34	0.7	210	0.034	NA	NA	FIT
212	KOKARALE	OPEN WELL	19-20	17.12.2019	R.T.	8	429.7	275	100	94	0.5	16.1	0.7	166	0.053	NA	NA	FIT
213	KUROLI (SIDDESHWA	HAND PUMP	16-17	7.20.2016	R.T.	8	NA	894	314	278	1.05	80.61	9.45	412	0.13	NA	NA	UNFIT
214	KUROLI (SIDDESHWA	OPEN WELL	16-17	7.20.2016	R.T.	8	NA	386	126	102	0.61	39.55	3.29	196	0.07	NA	NA	FIT
215	KUROLI (SIDDESHWA	HAND PUMP	16-17	7.9.2016	R.T.	8	NA	776	278	212	0.89	42.03	4.21	356	0.081	NA	NA	FIT
216	KUROLI (SIDDESHWA	OPEN WELL	16-17	19.01.17	R.T.	7	NA	365	120	120	0.4	31.93	0.47	170	0.051	NA	NA	FIT
217	KUROLI (SIDDESHWA	HAND PUMP	16-17	19.01.17	R.T.	7	NA	365	120	120	0.4	31.93	0.47	170	0.051	NA	NA	FIT
218	KUROLI (SIDDESHWA	OPEN WELL	17-18	27.01.2018	R.T.	8	439.1	281	200	48	0.04	73.85	42	156	2.44	NA	NA	UNFIT
219	KUROLI (SIDDESHWA	HAND PUMP	17-18	22.8.2017	R.T.	8	2531	1620	318	352	1.27	80.14	2.57	724	0.44	NA	NA	UNFIT
220	KUROLI (SIDDESHWA	HAND PUMP	17-18	23.08.2017	R.T.	8	784.4	502	152	166	0.36	41.76	1.12	200	0.093	NA	NA	FIT
221	KUROLI (SIDDESHWA	Dug Well	18-19	30.01.2019	R.T.	8	NA	270	64	36	0.006	2.871	2.503	92	0.067	NA	NA	FIT
222	KUROLI (SIDDESHWA	Dug Well	18-19	03.07.2018	R.T.	8	NA	344	168	68	0.87	4.99	0.1	220	0.02	NA	NA	FIT
223	KUROLI (SIDDESHWA	HAND PUMP	18-19	05.08.2018	R.T.	8	NA	568	166	160	0.51	41.26	2.3	302	0.062	NA	NA	UNFIT
224	KUROLI (SIDDESHWA	OPEN WELL	18-19	05.08.2018	R.T.	8	NA	585	312	114	1	16.62	0.89	274	0.09	NA	NA	FIT
225	KUROLI (SIDDESHWA	OPEN WELL	18-19	12.06.2018	R.T.	8	NA	633	200	220	0.58	36.38	1.93	360	0.109	NA	NA	FIT
226	KUROLI (SIDDESHWA	HAND PUMP	18-19	02.01.2019	R.T.	8	844	400	174	86	0.9	30.11	2.8	302	0.05	NA	NA	FIT
227	KUROLI (SIDDESHWA	HAND PUMP	18-19	02.02.2019	R.T.	8	1066	530	156	170	0.55	25.75	1.8	240	0.055	NA	NA	FIT
228	KUROLI (SIDDESHWA	OPEN WELL	18-19	02.02.2019	R.T.	8	1821	900	175	262	0.42	50.16	3.1	415	0.096	NA	NA	UNFIT
229	KUROLI (SIDDESHWA	HAND PUMP	18-19	02.04.2019	R.T.	8	802	390	76	60	0.29	18.17	0.52	160	0.042	NA	NA	FIT
230	KUROLI (SIDDESHWA	OPEN WELL	18-19	22.03.2019	R.T.	8	1026	554	174	148	0.89	23.56	1.56	198	0.045	NA	NA	FIT
231	KUROLI (SIDDESHWA	BORE WELL	18-19	22.03.2019	R.T.	8	845	487	166	140	0.48	25.65	1.26	192	0.059	NA	NA	FIT
232	KUROLI (SIDDESHWA	Dug Well	19-20	26.07.2019	R.T.	8	442.2	283	224	68	0.09	31.65	0.23	204	0.04	NA	NA	FIT
233	KUROLI (SIDDESHWA	HAND PUMP	19-20	22.05.2019	R.T.	8	781.3	500	140	120	0.15	20.12	1.08	150	0.038	NA	NA	FIT
234	KUROLI (SIDDESHWA	HAND PUMP	19-20	23.05.2019	R.T.	7	1172	750	192	192	0.69	58	1.86	186	0.041	NA	NA	UNFIT
235	KUROLI (SIDDESHWA	BORE WELL	19-20	23.05.2019	R.T.	8	806.3	516	128	130	0.13	19.1	1.12	140	0.031	NA	NA	FIT
236	KUROLI (SIDDESHWA	OPEN WELL	19-20	22.11.2019	R.T.	8	601.6	385	100	92	0.32	13.33	3	166	0.043	NA	NA	FIT
237	KUROLI (SIDDESHWA	HAND PUMP	19-20	25.11.2019	R.T.	8	1158	741	152	220	0.57	23.15	2.14	300	0.042	NA	NA	FIT
238	LALGUN	DEEPTUBEWELL	16-17	30.09.2016	R.T.	8	1352	865	192	124	0.206	29.57	1.13	440	0.11	NA	NA	FIT
239	LALGUN	DEEPTUBEWELL	16-17	22.11.2016	R.T.	8	731.3	468	88	44	0.52	2.65	0.61	328	0.18	NA	NA	FIT
240	LALGUN	HAND PUMP	16-17	5.30.2016	R.T.	8	NA	656	184	178	0.18	35.45	4.17	368	0.07	NA	NA	FIT
241	LALGUN	OPEN WELL	16-17	5.30.2016	R.T.	8	NA	711	248	218	0.45	55.14	7.19	346	0.08	NA	NA	UNFIT

Atal Bhujal Yojana - Block Hydrogeological Report

242	LALGUN	OPEN WELL	16-17	15.12.16	R.T.	8	NA	496	118	118	0.39	35.93	1.32	230	0.048	NA	NA	FIT
243	LALGUN	HAND PUMP	16-17	15.12.16	R.T.	7	NA	496	118	118	0.39	35.93	1.32	230	0.048	NA	NA	FIT
244	LALGUN	OPEN WELL	17-18	14.8.2017	R.T.	8	503.1	322	100	78	0.37	31.09	0.33	190	0.029	NA	NA	FIT
245	LALGUN	HAND PUMP	17-18	14.8.2017	R.T.	8	753.1	482	300	90	0.41	32.85	0.44	218	0.045	NA	NA	FIT
246	LALGUN	HAND PUMP	17-18	28.2.2018	R.T.	8	576.6	369	110	118	0.62	25.66	0.94	192	0.055	NA	NA	FIT
247	LALGUN	Dug Well	18-19	30.01.2019	R.T.	8	NA	321	72	52	0.056	37.761	3.988	164	0.062	NA	NA	FIT
248	LALGUN	Dug Well	18-19	03.07.2018	R.T.	8	NA	238	176	24	0.53	8.64	0.17	204	0.01	NA	NA	FIT
249	LALGUN	OPEN WELL	18-19	26.6.2018	R.T.	8	NA	392	100	100	0.34	25.91	1.37	210	0.039	NA	NA	FIT
250	LALGUN	HAND PUMP	18-19	26.6.2018	R.T.	8	NA	380	100	100	0.38	24.3	1.3	190	0.044	NA	NA	FIT
251	LALGUN	HAND PUMP	18-19	26.6.2018	R.T.	8	NA	400	114	122	0.6	29.27	0.95	200	1	NA	NA	UNFIT
252	LALGUN	OPEN WELL	18-19	10.12.2018	R.T.	8	NA	478	130	112	0.46	20.12	0.96	210	0.099	NA	NA	FIT
253	LALGUN	HAND PUMP	18-19	10.12.2018	R.T.	8	NA	622	190	166	0.51	31.17	1.22	316	0.076	NA	NA	FIT
254	LALGUN	OPEN WELL	18-19	27.03.2019	R.T.	8	815	410	180	182	0.036	18.3	0.99	200	0.036	NA	NA	FIT
255	LALGUN	HAND PUMP	18-19	27.03.2019	R.T.	8	826	420	120	180	0.036	18.7	0.91	190	0.036	NA	NA	FIT
256	LALGUN	Dug Well	19-20	26.07.2019	R.T.	8	379.7	243	208	60	0.07	23.48	1.47	172	0.06	NA	NA	FIT
257	LALGUN	OPEN WELL	19-20	22.10.2019	R.T.	8	570.3	365	120	120	0.4	31.93	0.47	170	0.051	NA	NA	FIT
258	LALGUN	HAND PUMP	19-20	22.10.2019	R.T.	8	648.4	415	118	110	0.46	35.14	0.29	160	0.006	NA	NA	FIT
259	MAYANI	DEEPTUBEWELL	16-17	30.09.2016	R.T.	8	565.6	362	52	72	0.226	4.04	3.27	152	0.09	NA	NA	FIT
260	MAYANI	DEEPTUBEWELL	16-17	22.11.2016	R.T.	7	278.1	178	40	36	0.003	0.29	0.52	92	0.21	NA	NA	FIT
261	MAYANI	HAND PUMP	16-17	7.27.2016	R.T.	8	NA	1050	274	278	0.66	106.53	10.58	418	0.12	NA	NA	UNFIT
262	MAYANI	OPEN WELL	16-17	7.27.2016	R.T.	8	NA	1810	312	340	1.09	119.26	14.36	816	0.2	NA	NA	UNFIT
263	MAYANI	HAND PUMP	16-17	3.9.2016	R.T.	7	NA	630	188	148	0.78	41.21	3.61	252	0.084	NA	NA	FIT
264	MAYANI	HAND PUMP	17-18	10.07.2017	R.T.	8	570.3	365	122	110	0.55	32.35	3.24	180	0.049	NA	NA	FIT
265	MAYANI	OPEN WELL	17-18	10.07.2017	R.T.	8	807.8	517	148	140	0.58	56.46	3.14	260	0.079	NA	NA	UNFIT
266	MAYANI	HAND PUMP	17-18	23.10.2017	R.T.	8	551.6	353	76	54	0.55	29.16	0.37	160	0.038	NA	NA	FIT
267	MAYANI	Dug Well	18-19	30.01.2019	R.T.	8	NA	304	84	48	0.006	37.274	3.431	164	0.057	NA	NA	FIT
268	MAYANI	Dug Well	18-19	03.07.2018	R.T.	8	NA	542	208	40	0.56	6.21	0.64	312	0.03	NA	NA	FIT
269	MAYANI	HAND PUMP	18-19	20.4.2018	R.T.	8	NA	641	116	38	0.14	14.55	0.21	216	0.01	NA	NA	FIT
270	MAYANI	OPEN WELL	18-19	21.4.2018	R.T.	8	NA	648	216	40	0.14	14.55	0.1	212	0.03	NA	NA	FIT
271	MAYANI	HAND PUMP	18-19	18.8.2018	R.T.	8	NA	546	194	168	0.63	31.55	2.65	232	0.12	NA	NA	FIT
272	MAYANI	OPEN WELL	18-19	18.8.2018	R.T.	8	NA	533	194	172	0.74	31.26	2.33	238	0.1	NA	NA	FIT
273	MAYANI	HAND PUMP	18-19	31.1.2019	R.T.	8	NA	670	130	120	0.55	22.19	1.15	162	0.03	NA	NA	FIT
274	MAYANI	OPEN WELL	18-19	31.1.2019	R.T.	8	NA	431	140	130	0.5	24.2	1.2	162	0.068	NA	NA	FIT
275	MAYANI	Dug Well	19-20	26.07.2019	R.T.	8	365.6	234	204	56	0.06	21.84	1.2	160	0.07	NA	NA	FIT
276	MAYANI	HAND PUMP	19-20	25.04.2019	R.T.	8	828.1	530	142	132	0.4	39.1	1.63	138	0.079	NA	NA	FIT
277	MAYANI	OPEN WELL	19-20	04.12.2019	R.T.	8	400	256	124	108	0.5	28.29	1.22	136	0.06	NA	NA	FIT
278	MAYANI	HAND PUMP	19-20	04.12.2019	R.T.	8	642.2	411	48	112	0.6	12	2.46	100	0.07	NA	NA	FIT
279	MAYANI	HAND PUMP	19-20	05.12.2019	R.T.	8	584.4	374	44	60	0.8	10	0.65	120	0.06	NA	NA	FIT
280	MOL	DEEPTUBEWELL	16-17	06.02.2016	R.T.	8	909.4	582	32	92	1.73	0.9	0.29	44	0.07	NA	NA	UNFIT

Atal Bhujal Yojana - Block Hydrogeological Report

281	MOL	DEEPTUBEWELL	16-17	22.11.2016	R.T.	8	1120	717	84	116	0.225	31.9	0.39	472	1.45	NA	NA	UNFIT
282	MOL	BORE WELL	16-17	7.9.2016	R.T.	8	NA	153	58	44	0.25	5.63	0.36	80	0.021	NA	NA	FIT
283	MOL	BORE WELL	16-17	17.12.16	R.T.	8	NA	439	116	112	0.61	33.75	1.18	172	0.063	NA	NA	FIT
284	MOL	OPEN WELL	16-17	17.12.16	R.T.	7	NA	546	144	130	0.63	40.14	1.83	288	0.063	NA	NA	FIT
285	MOL	BORE WELL	17-18	14.8.2017	R.T.	8	660.9	423	290	66	0.56	21.12	1.12	280	0.063	NA	NA	FIT
286	MOL	HAND PUMP	17-18	14.8.2017	R.T.	8	471.9	302	168	40	0.72	15.1	0.95	218	0.038	NA	NA	FIT
287	MOL	BORE WELL	17-18	14.8.2017	R.T.	8	468.8	300	220	90	0.81	17.7	1.1	154	0.044	NA	NA	FIT
288	MOL	BORE WELL	17-18	03.01.2018	R.T.	8	706.3	452	142	126	0.48	28.11	1.25	140	0.077	NA	NA	FIT
289	MOL	HAND PUMP	17-18	03.01.2018	R.T.	8	721.9	462	138	140	0.79	37.99	1.45	208	0.095	NA	NA	FIT
290	MOL	Dug Well	18-19	30.01.2019	R.T.	8	NA	343	92	56	0.006	38.949	2.41	172	0.081	NA	NA	FIT
291	MOL	Dug Well	18-19	03.07.2018	R.T.	8	NA	195	128	60	0.8	7.85	0.2	120	0.01	NA	NA	FIT
292	MOL	OPEN WELL	18-19	27.6.2018	R.T.	8	NA	243	80	68	0.24	26.73	0.38	110	0.047	NA	NA	FIT
293	MOL	BORE WELL	18-19	27.6.2018	R.T.	8	NA	365	120	120	0.4	31.93	0.47	170	0.051	NA	NA	FIT
294	MOL	OPEN WELL	18-19	18.10.2018	R.T.	8	NA	613	174	174	0.44	30.45	1.07	230	0.077	NA	NA	FIT
295	MOL	HAND PUMP	18-19	18.10.2018	R.T.	8	NA	392	94	194	0.35	18.06	0.99	160	0.047	NA	NA	FIT
296	MOL	OPEN WELL	18-19	18.10.2018	R.T.	8	NA	205	72	66	0.23	11.23	0.79	114	0.036	NA	NA	FIT
297	MOL	OPEN WELL	18-19	15.1.2019	R.T.	8	NA	125	68	36	0.13	3.16	0.87	86	0.051	NA	NA	FIT
298	MOL	OPEN WELL	18-19	28.03.2019	R.T.	8	699	370	180	110	0.7	18.5	0.7	210	0.102	NA	NA	FIT
299	MOL	HAND PUMP	18-19	28.03.2019	R.T.	8	458	230	74	80	0.46	19.8	0.46	74	0.09	NA	NA	FIT
300	MOL	BORE WELL	18-19	29.03.2019	R.T.	8	1059	560	178	180	0.36	18.9	0.36	190	0.093	NA	NA	FIT
301	MOL	HAND PUMP	18-19	29.03.2019	R.T.	8	1059	535	190	190	0.63	17.4	0.63	180	0.086	NA	NA	FIT
302	MOL	Dug Well	19-20	26.07.2019	R.T.	8	385.9	247	220	64	0.05	23.37	0.25	168	0.08	NA	NA	FIT
303	MOL	OPEN WELL	19-20	23.10.2019	R.T.	7	498.4	319	112	100	0.46	20.28	0.48	152	0.069	NA	NA	FIT
304	MOL	BORE WELL	19-20	23.10.2019	R.T.	7	498.4	319	112	100	0.46	20.28	0.48	152	0.069	NA	NA	FIT
305	MOL	OPEN WELL	19-20	12.12.2019	R.T.	8	525	336	174	132	0.19	23	0.68	130	0.04	NA	NA	FIT
306	PUSESAWALI	DEEPTUBEWELL	16-17	30.09.2016	R.T.	7	1111	711	253	60	0.148	47.33	1.22	388	0.09	NA	NA	UNFIT
307	PUSESAWALI	HAND PUMP	16-17	6.7.2016	R.T.	8	NA	630	218	194	0.28	29.41	2.56	346	0.08	NA	NA	FIT
308	PUSESAWALI	OPEN WELL	16-17	6.7.2016	R.T.	8	NA	750	234	220	0.25	27.76	4.52	374	0.03	NA	NA	FIT
309	PUSESAWALI	BORE WELL	16-17	6.7.2016	R.T.	8	NA	494	240	190	0.84	14.52	3.12	254	0.33	NA	NA	UNFIT
310	PUSESAWALI	OPEN WELL	16-17	9.12.2016	R.T.	7	NA	720	240	228	0.47	70.26	3.17	332	0.26	NA	NA	UNFIT
311	PUSESAWALI	HAND PUMP	16-17	9.12.2016	R.T.	8	NA	507	218	160	0.73	41.37	3.19	262	0.059	NA	NA	FIT
312	PUSESAWALI	OPEN WELL	17-18	27.01.2018	R.T.	8	693.8	444	304	88	0.05	77.52	4.89	224	0.21	NA	NA	UNFIT

Atal Bhujal Yojana - Block Hydrogeological Report

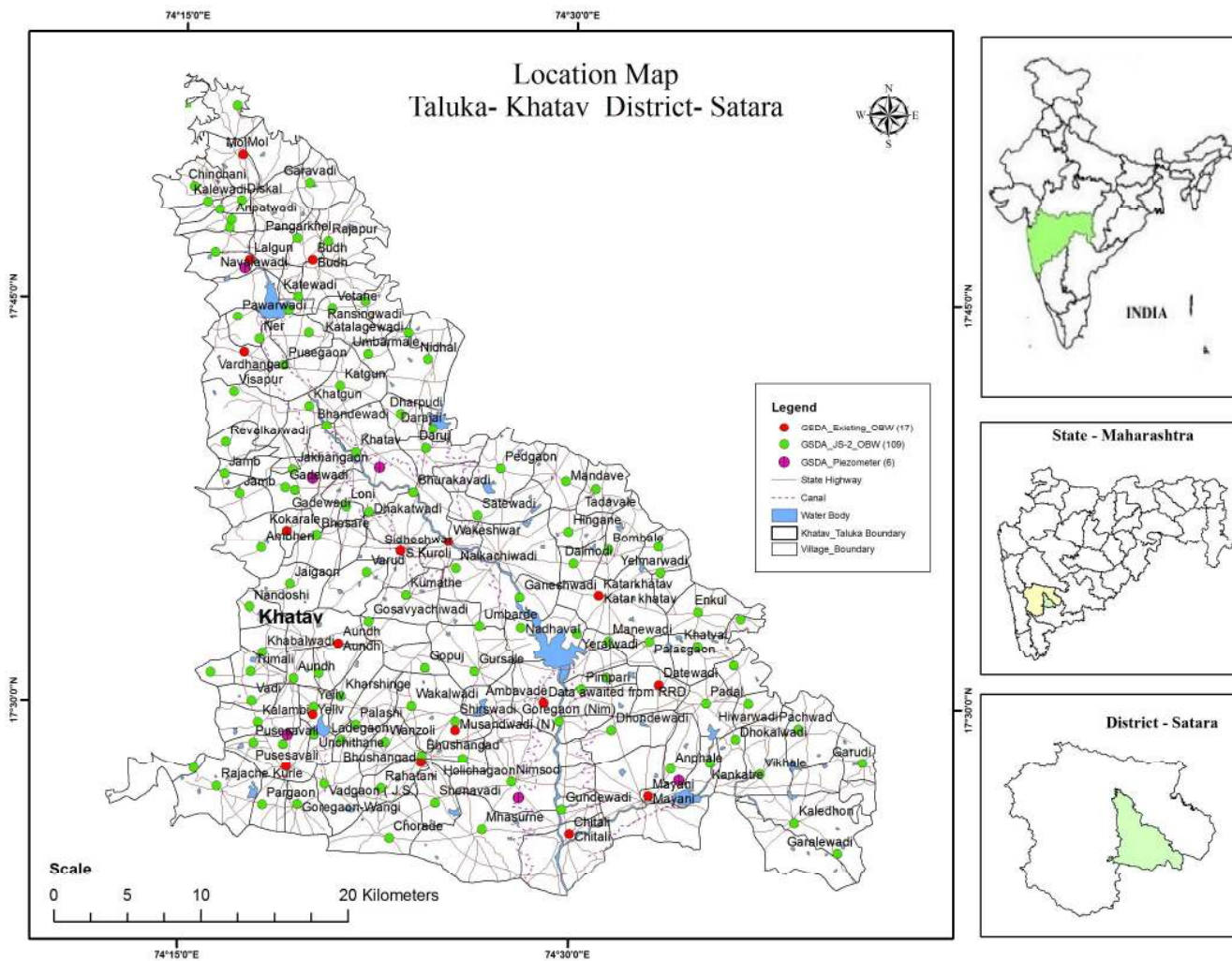
313	PUSESAWALI	HAND PUMP	17-18	11.02.2017	R.T.	8	479.7	307	96	96	0.66	21.05	0.81	156	0.079	NA	NA	FIT
314	PUSESAWALI	HAND PUMP	17-18	11.09.2017	R.T.	8	479.7	307	86	80	0.76	20.95	0.21	140	0.01	NA	NA	FIT
315	PUSESAWALI	Dug Well	18-19	30.01.2019	R.T.	8	NA	445	84	72	0.036	65.52	5.102	216	0.076	NA	NA	UNFIT
316	PUSESAWALI	Dug Well	18-19	04.07.2018	R.T.	8	NA	230	188	28	0.5	12.02	0.21	200	0.02	NA	NA	FIT
317	PUSESAWALI	HAND PUMP	18-19	05.05.2018	R.T.	8	NA	800	140	130	0.62	52	1.53	326	0.058	NA	NA	UNFIT
318	PUSESAWALI	HAND PUMP	18-19	05.07.2018	R.T.	8	NA	576	140	130	0.62	41	1.53	290	0.058	NA	NA	FIT
319	PUSESAWALI	HAND PUMP	18-19	08.01.2018	R.T.	8	NA	617	176	182	0.19	30.55	2.3	390	0.08	NA	NA	FIT
320	PUSESAWALI	OPEN WELL	18-19	22.10.2018	R.T.	8	NA	665	136	156	0.46	36.15	1.35	212	0.053	NA	NA	FIT
321	PUSESAWALI	HAND PUMP	18-19	22.10.2018	R.T.	8	NA	501	154	180	0.44	25.41	1.07	208	0.088	NA	NA	FIT
322	PUSESAWALI	HAND PUMP	18-19	02.05.2019	R.T.	8	918	450	130	132	0.4	20.1	0.67	170	0.07	NA	NA	FIT
323	PUSESAWALI	Dug Well	19-20	26.07.2019	R.T.	8	248.4	159	148	44	0.02	3.74	0.17	100	0.01	NA	NA	FIT
324	PUSESAWALI	OPEN WELL	19-20	22.04.2019	R.T.	8	1078	690	270	190	0.28	23.1	1.12	290	0.036	NA	NA	FIT
325	PUSESAWALI	HAND PUMP	19-20	22.04.2019	R.T.	8	765.6	490	150	130	0.12	20.1	1.4	144	0.053	NA	NA	FIT
326	PUSESAWALI	OPEN WELL	19-20	10.12.2019	R.T.	8	643.8	412	132	110	0.52	33	2	180	0.062	NA	NA	FIT
327	PUSESAWALI	HAND PUMP	19-20	10.12.2019	R.T.	8	731.3	468	136	118	0.66	35	0.89	200	0.073	NA	NA	FIT
328	PUSESAWALI	HAND PUMP	19-20	11.12.2019	R.T.	7	376.6	241	84	76	0.58	18	2	130	0.079	NA	NA	FIT
329	VARDHANGAD	OPEN WELL	16-17	5.1.2017	R.T.	8	NA	612	176	180	0.88	69.24	3.22	310	0.1	NA	NA	UNFIT
330	VARDHANGAD	OPEN WELL	16-17	5.1.2017	R.T.	8	NA	320	110	104	0.54	21.36	1.45	122	0.04	NA	NA	FIT
331	VARDHANGAD	HAND PUMP	16-17	5.1.2017	R.T.	8	NA	365	122	110	0.55	32.35	2.06	180	0.049	NA	NA	FIT
332	VARDHANGAD	HAND PUMP	17-18	07.06.2017	R.T.	8	1875	1200	288	236	1.14	69.36	2.72	638	0.068	NA	NA	UNFIT
333	VARDHANGAD	OPEN WELL	17-18	07.06.2017	R.T.	8	1641	1050	196	204	0.93	60.11	1.89	628	0.081	NA	NA	UNFIT
334	VARDHANGAD	HAND PUMP	17-18	08.08.2017	R.T.	8	496.9	318	92	100	0.51	30	0.96	150	0.13	NA	NA	FIT
335	VARDHANGAD	OPEN WELL	17-18	08.08.2017	R.T.	8	607.8	389	92	120	0.37	36.86	0.75	168	0.063	NA	NA	FIT
336	VARDHANGAD	OPEN WELL	17-18	08.08.2017	R.T.	8	906.3	580	160	210	0.68	35.52	0.84	300	0.1	NA	NA	FIT
337	VARDHANGAD	HAND PUMP	17-18	08.08.2017	R.T.	8	640.6	410	112	132	0.36	29.84	0.89	170	0.072	NA	NA	FIT
338	VARDHANGAD	OPEN WELL	17-18	08.08.2017	R.T.	8	781.3	500	116	134	0.41	37.57	0.85	272	0.078	NA	NA	FIT
339	VARDHANGAD	HAND PUMP	17-18	17.2.2018	R.T.	8	757.8	485	154	136	0.7	40.15	4.14	178	0.07	NA	NA	FIT
340	VARDHANGAD	OPEN WELL	17-18	17.2.2018	R.T.	8	696.9	446	140	110	0.79	33.92	2.61	148	0.07	NA	NA	FIT
341	VARDHANGAD	HAND PUMP	17-18	20.2.2018	R.T.	8	729.7	467	144	120	0.83	40.95	4.15	178	0.09	NA	NA	FIT
342	VARDHANGAD	OPEN WELL	18-19	30.06.2018	R.T.	8	769	492	72	84	0.794	25.676	0.803	112	0.065	NA	NA	FIT
343	VARDHANGAD	PWS	18-19	09.08.2018	R.T.	8	NA	228	124	32	0.038	22.602	6.124	168	0.067	NA	NA	FIT
344	VARDHANGAD	HAND PUMP	18-19	09.08.2018	R.T.	8	NA	402	208	88	0.038	12.9	15.685	244	0.071	NA	NA	FIT
345	VARDHANGAD	HAND PUMP	18-19	09.08.2018	R.T.	8	NA	390	172	116	0.048	43.441	11.508	272	0.076	NA	NA	FIT
346	VARDHANGAD	Dug Well	18-19	30.01.2019	R.T.	8	NA	347	76	52	0.021	5.174	4.545	220	0.096	NA	NA	FIT
347	VARDHANGAD	Dug Well	18-19	04.07.2018	R.T.	8	NA	273	260	20	0.88	3.7	0.45	236	0.02	NA	NA	FIT
348	VARDHANGAD	OPEN WELL	18-19	06.07.2018	R.T.	7	NA	400	124	120	0.36	23.45	1.41	204	0.038	NA	NA	FIT
349	VARDHANGAD	OPEN WELL	18-19	06.07.2018	R.T.	8	NA	500	148	140	0.58	43.15	1.41	260	0.079	NA	NA	FIT
350	VARDHANGAD	OPEN WELL	18-19	10.12.2018	R.T.	8	NA	436	118	134	0.41	19.91	0.76	190	0.033	NA	NA	FIT

Atal Bhujal Yojana - Block Hydrogeological Report

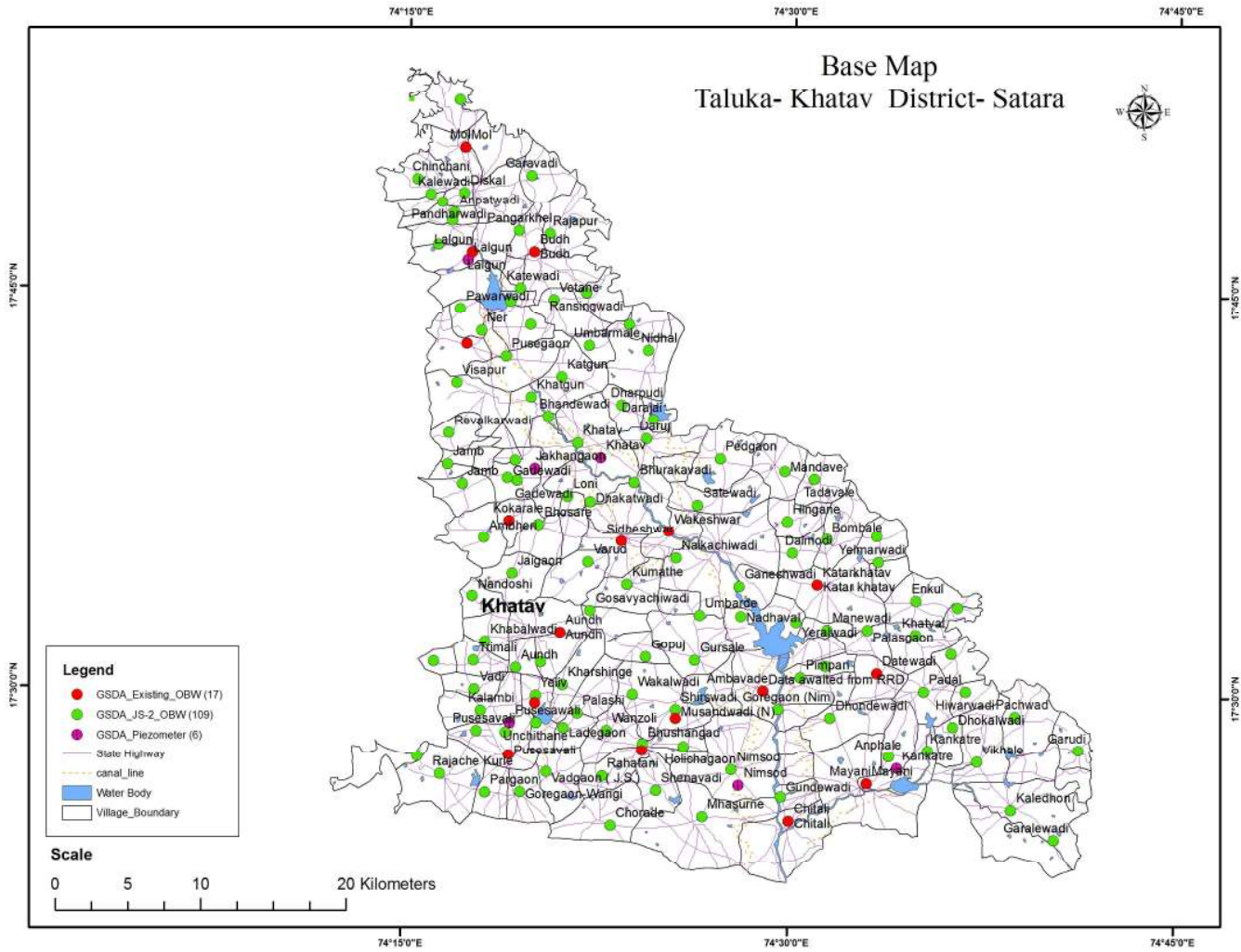
351	VARDHANGAD	HAND PUMP	18-19	10.12.2018	R.T.	8	NA	436	118	136	0.42	18.77	0.9	184	0.029	NA	NA	FIT
352	VARDHANGAD	OPEN WELL	18-19	26.03.2019	R.T.	8	1256	635	90	90	0.04	46.68	0.5	250	0.55	NA	NA	UNFIT
353	VARDHANGAD	Dug Well	19-20	26.07.2019	R.T.	8	381.3	244	236	76	0.07	32.48	0.31	144	0.04	NA	NA	FIT
354	VARDHANGAD	HAND PUMP	19-20	14.10.2019	R.T.	8	562.5	360	94	80	0.92	18.18	0.46	166	0.059	NA	NA	FIT
355	VARDHANGAD	HAND PUMP	19-20	14.10.2019	R.T.	8	1197	766	188	200	0.98	41.11	2.88	312	0.131	NA	NA	FIT
356	VARDHANGAD	HAND PUMP	19-20	15.10.2019	R.T.	8	801.6	513	192	188	0.43	27.12	2.06	244	0.142	NA	NA	FIT
357	WAKESHWAR	HAND PUMP	16-17	25.01.17	R.T.	8	NA	749	244	244	0.64	80.07	2.29	320	0.049	NA	NA	UNFIT
358	WAKESHWAR	DEEPTUBEWELL	16-17	30.09.2016	R.T.	7	709.4	454	84	72	0.236	21.06	2.39	292	0.12	NA	NA	FIT
359	WAKESHWAR	DEEPTUBEWELL	16-17	22.11.2016	R.T.	7	846.9	542	120	56	0.51	35.98	0.93	312	0.24	NA	NA	FIT
360	WAKESHWAR	DEEPTUBEWELL	16-17	22.11.2016	R.T.	7	1095	701	112	96	0.14	11.81	1.2	436	0.09	NA	NA	FIT
361	WAKESHWAR	HAND PUMP	16-17	7.19.2016	R.T.	8	NA	746	252	232	0.93	52.53	4.13	354	0.12	NA	NA	UNFIT
362	WAKESHWAR	BORE WELL	16-17	7.19.2016	R.T.	8	NA	662	176	154	0.92	55.44	4.49	338	0.09	NA	NA	UNFIT
363	WAKESHWAR	OPEN WELL	16-17	25.01.17	R.T.	7	NA	583	210	170	0.91	84.36	4.02	240	0.059	NA	NA	UNFIT
364	WAKESHWAR	BORE WELL	16-17	25.01.17	R.T.	7	NA	327	154	108	0.29	33.55	0.46	160	0.035	NA	NA	FIT
365	WAKESHWAR	OPEN WELL	18-19	02.01.2019	R.T.	8	1026	530	130	190	0.07	36.7	2.82	274	0.08	NA	NA	FIT
366	WAKESHWAR	HAND PUMP	18-19	02.01.2019	R.T.	8	865	490	131	160	0.09	30.89	1.9	300	0.089	NA	NA	FIT
367	WAKESHWAR	HAND PUMP	18-19	02.01.2019	R.T.	8	1056	560	171	210	0.06	30.6	2.16	160	0.075	NA	NA	FIT
368	WAKESHWAR	Dug Well	19-20	26.07.2019	R.T.	8	242.2	155	176	40	0.02	12.65	0.25	96	0.07	NA	NA	FIT
369	WAKESHWAR	OPEN WELL	19-20	24.05.2019	R.T.	8	800	512	220	210	0.24	20.12	0.063	190	0.15	NA	NA	FIT
370	WAKESHWAR	HAND PUMP	19-20	24.05.2019	R.T.	8	812.5	520	110	192	0.3	40.1	0.038	210	0.048	NA	NA	FIT
371	WAKESHWAR	HAND PUMP	19-20	15.11.2019	R.T.	8	785.9	503	100	160	0.26	29.84	1.47	230	0.095	NA	NA	FIT
372	WAKESHWAR	OPEN WELL	19-20	15.11.2019	R.T.	8	707.8	453	180	168	0.96	20.55	0.74	232	0.063	NA	NA	FIT
373	YELIV	DEEPTUBEWELL	16-17	30.09.2016	R.T.	7	2219	1420	312	168	0.287	96.05	12.17	608	0.09	NA	NA	UNFIT
374	YELIV	OPEN WELL	16-17	6.7.2016	R.T.	8	NA	169	78	32	0.7	18.27	1.2	88	0.01	NA	NA	FIT
375	YELIV	OPEN WELL	16-17	7.12.2016	R.T.	8	NA	439	144	140	0.38	35.11	1.29	220	0.061	NA	NA	FIT
376	YELIV	HAND PUMP	17-18	21.11.2017	R.T.	8	462.5	296	100	100	0.24	27.89	0.52	140	0.036	NA	NA	FIT
377	YELIV	OPEN WELL	17-18	21.11.2017	R.T.	8	612.5	392	106	116	0.44	38.77	0.74	126	0.034	NA	NA	FIT
378	YELIV	Dug Well	18-19	30.01.2019	R.T.	8	NA	310	64	48	0.006	6.592	3.06	192	0.115	NA	NA	FIT
379	YELIV	Dug Well	18-19	04.07.2018	R.T.	8	NA	214	160	28	0.24	11.8	0.61	156	0.02	NA	NA	FIT
380	YELIV	OPEN WELL	18-19	05.03.2018	R.T.	8	NA	459	118	118	0.46	37.99	0.77	164	0.064	NA	NA	FIT
381	YELIV	HAND PUMP	18-19	05.03.2018	R.T.	7	NA	323	150	108	0.27	33.48	0.37	160	0.035	NA	NA	FIT
382	YELIV	HAND PUMP	18-19	08.02.2018	R.T.	8	NA	230	82	68	0.19	2.78	1.5	132	0.02	NA	NA	FIT
383	YELIV	OPEN WELL	18-19	08.02.2018	R.T.	8	NA	265	98	78	0.2	2.59	1.33	114	0.01	NA	NA	FIT
384	YELIV	HAND PUMP	18-19	08.02.2018	R.T.	8	NA	816	120	144	0.52	55.89	0.95	300	0.231	NA	NA	UNFIT
385	YELIV	OPEN WELL	18-19	26.10.2018	R.T.	8	NA	407	128	132	0.22	18.26	0.69	198	0.044	NA	NA	FIT
386	YELIV	HAND PUMP	18-19	26.10.2018	R.T.	8	NA	432	132	128	0.03	19.14	0.48	162	0.038	NA	NA	FIT
387	Yeliv	Dug Well	19-20	26.07.2019	R.T.	8	425	272	152	64	0.09	38.87	0.47	204	0.08	NA	NA	FIT
388	YELIV	OPEN WELL	19-20	20.04.2019	R.T.	8	812.5	520	140	140	0.38	20.1	1.1	230	0.063	NA	NA	FIT
389	YELIV	HAND PUMP	19-20	20.04.2019	R.T.	8	796.9	510	320	310	0.37	20.1	2.1	320	0.036	NA	NA	FIT
390	YELIV	HAND PUMP	19-20	11.12.2019	R.T.	8	493.8	316	100	100	0.29	25	1	134	0.036	NA	NA	FIT
391	YELIV	OPEN WELL	19-20	11.12.2019	R.T.	8	471.9	302	100	100	0.38	30.44	2	140	0.047	NA	NA	FIT

TABLE-03- Continued																
WATER QUALITY (WQ) DATA OF MONITORING STATIONS-CGWB																
STATE-MAHARASHTRA, DISTRICT-SATARA, TALUKA-KHATAV																
Sr.No.	Well No./Locaton	Well Type	Village	Date of Testing	Temp	EC (µS/cm)	pH	Ca	Mg	Na	K	HCO3	CL	SO4	NO3	F
1	W172743074370501	DW	Vikhle	21-05-2016		857	7.4	68	22.94	74	0.84	351	59	28	39	0.59
2	W172743074370501	DW	Vikhle	21-05-2015		703	7.9	50	21.94	75	0.42	281	89	37	17	0.38
3	W172743074370501	DW	Vikhle	21-05-2015												
4	W172743074370501	DW	Vikhle	21-05-2017		942	8.2	22	56.19	92	1.3	398	76	19	12	0.23
5	W173200074200001	DW	Aundh	21-05-2016		1386	7.6	96	27.83	88	79.48	371	116	130	49	0.49
6	W173200074200001	DW	Aundh	21-05-2015												
7	W173200074200001	DW	Aundh	21-05-2017		1207	8.1	51	41.03	81	85.2	345	150	1	44	0.07
8	W173200074200001	DW	Aundh	21-05-2015		1309	7.5	80	28.06	80	10.36	317	181	135	35	0.29
9	W173900074310001	DW	Pingli	21-05-2015		716	8.1	100	23.22	36	3.53	268	99	53	8	0.49
10	W173900074310001	DW	Pingli	21-05-2015												
11	W175015074161001	DW	Manjarvadi (Mol)	21-05-2015												
12	W175015074161001	DW	Manjarvadi (Mol)	21-05-2015		505	7.8	68	12.24	29	1.28	226	39	54	10	0.44
13	W175015074161001	DW	Manjarvadi (Mol)	21-05-2017		471	7.8	57	15.02	20	1.3	220	26	8	22	0.39

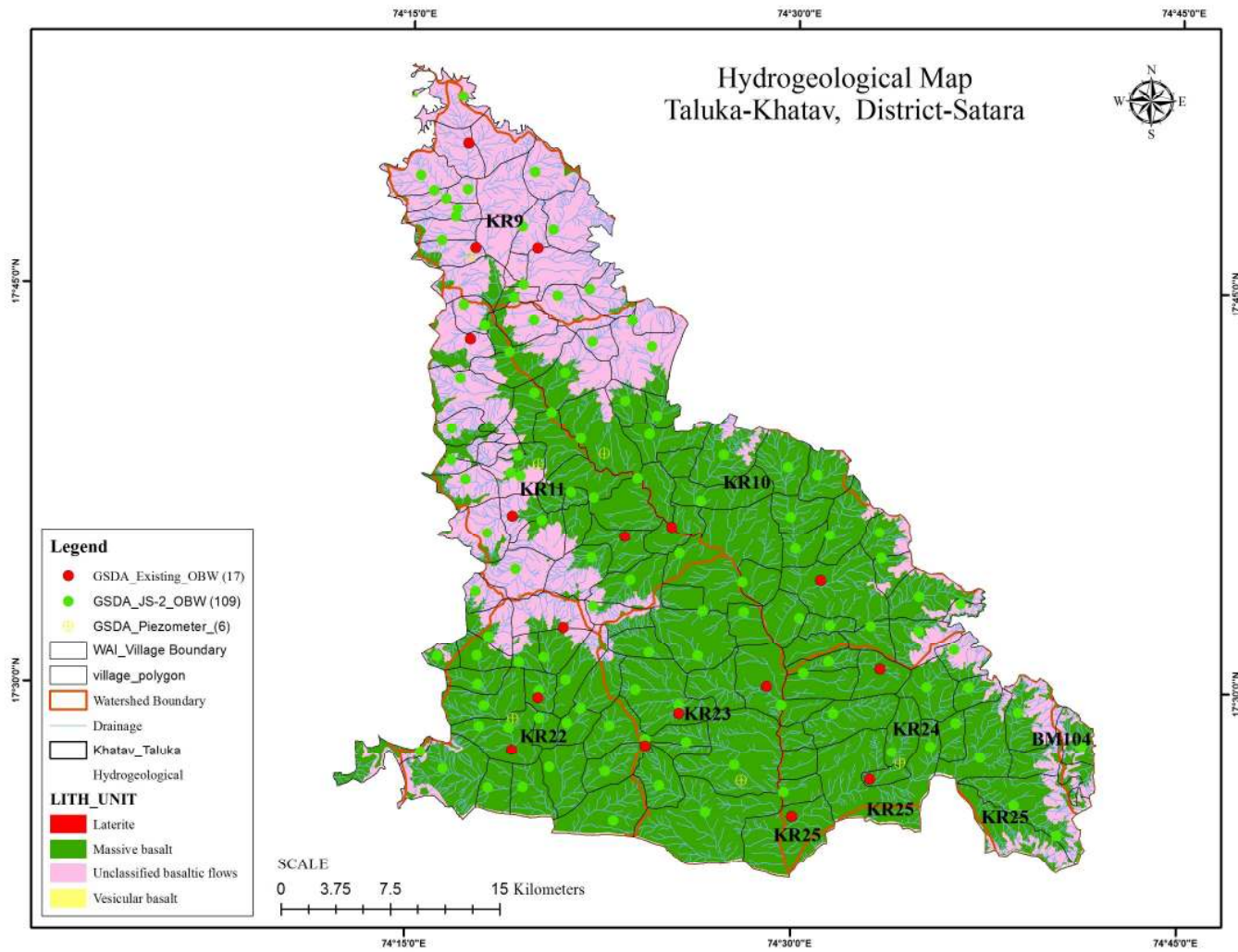
Map- 1. Location Map



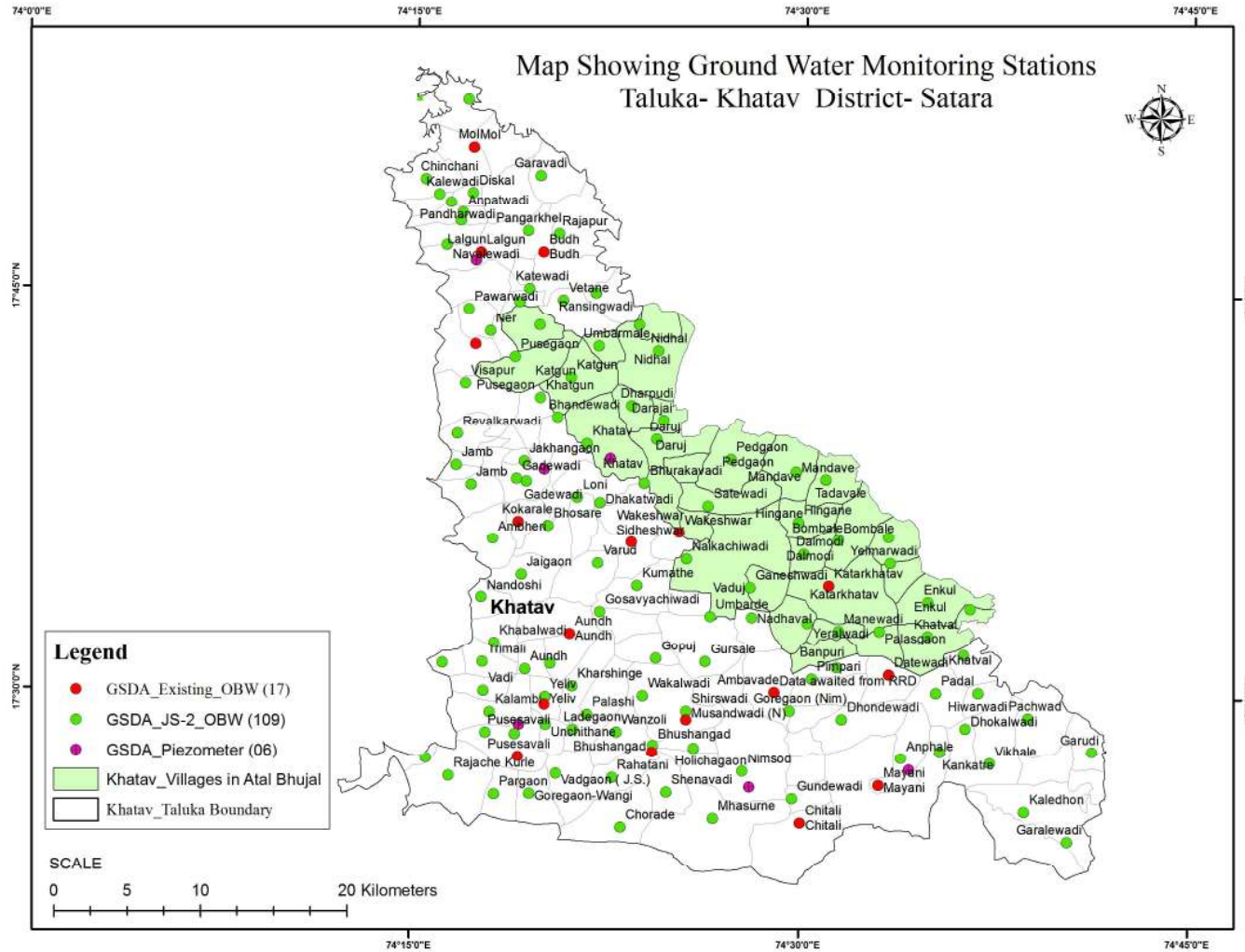
Map- 2. Base Map



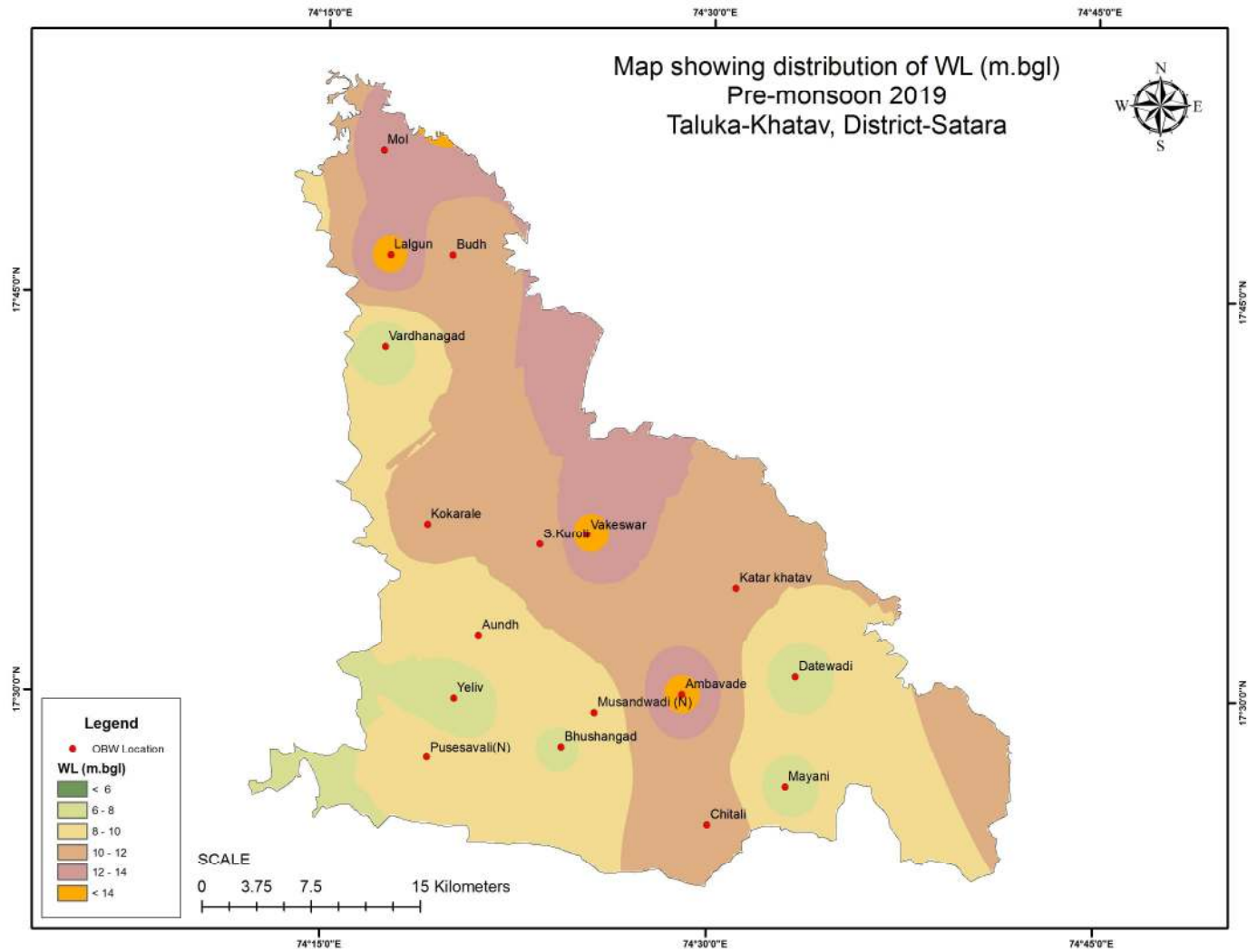
Map- 3. Hydro geological Map



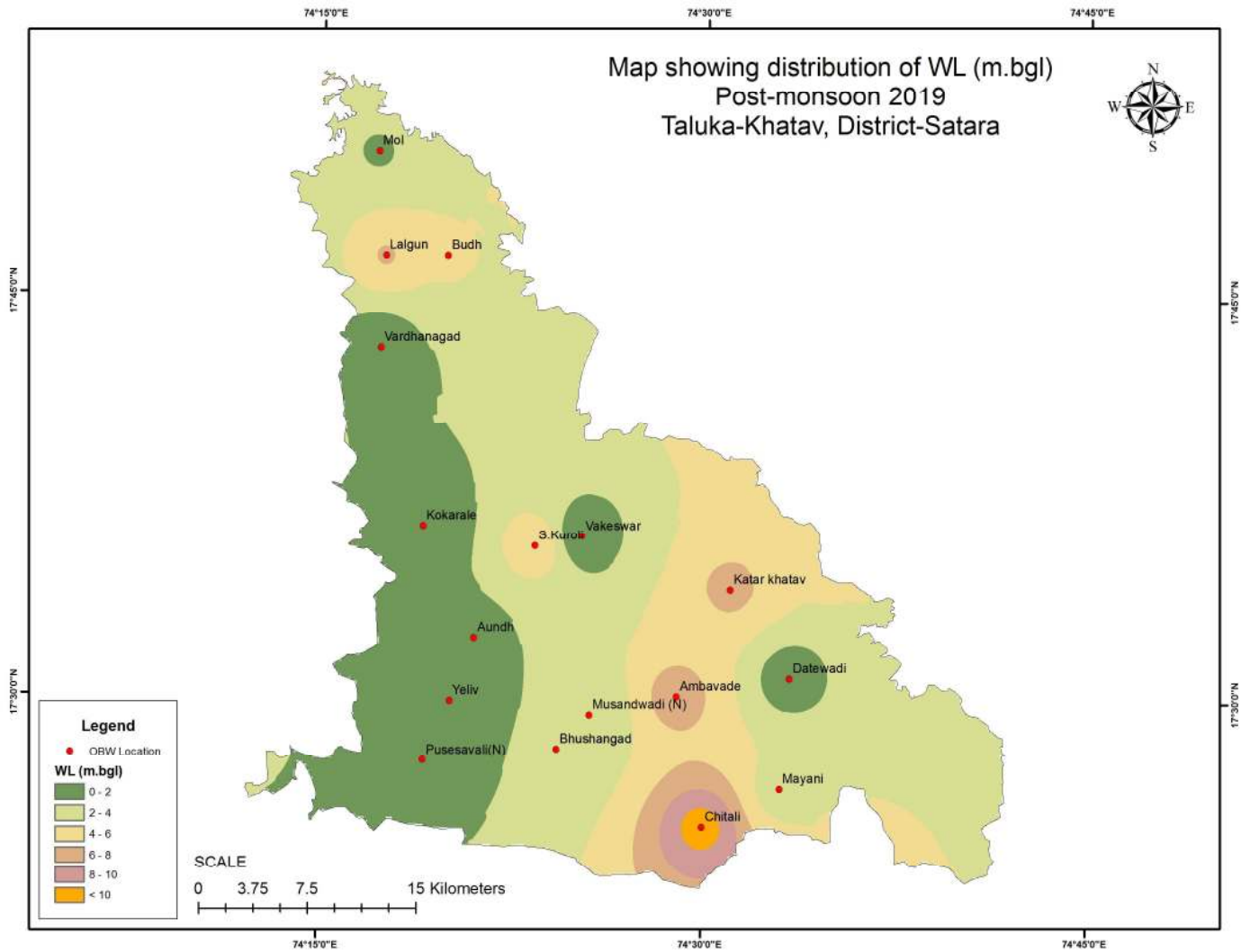
Map-4. Locations of OBW Map



Map- 5. Pre-Monsoon GWL Map



Map- 6. Post-Monsoon GWL Map



Map- 7. Map showing distribution of EC ($\mu S/cm$ at 25 °C) in ground water

