

# ATAL BHUJAL YOJANA (Atal Jal)

**State: Maharashtra**

**Department: Ground water Surveys and Development Agency**

## HYDROGEOLOGICAL REPORT

**BLOCK :Parola**

**DISTRICT : Jalgaon**

**YEAR : 2020**

---

*Towards partial fulfillment of requirements for Disbursement of  
Incentive under DLI -9*

**DATE OF DISCLOSURE: ०२५०/११./२०२०**

# HYDROGEOLOGICAL REPORT

(YEAR : 2019-20)

|                        |   |             |
|------------------------|---|-------------|
| <b>STATE</b>           | : | Maharashtra |
| <b>DISTRICT</b>        | : | Jalgaon     |
| <b>BLOCK/TALUK</b>     | : | Parola      |
| <b>BLOCK/TALUK HQs</b> |   | Parola      |

| A  | GENERAL INFORMATION                      |   |                   |             |             |           |        |
|----|------------------------------------------|---|-------------------|-------------|-------------|-----------|--------|
| 1. | Geographical area (Ha)                   | : | 87608.81          |             |             |           |        |
| 2. | No. of Gram Panchayats                   | : | 83                |             |             |           |        |
| 3. | No. of towns                             |   | 1                 |             |             |           |        |
| 4. | No. of villages                          | : | 116               |             |             |           |        |
| 5. | Population (2011)                        | : | Male              | Female      | Total       |           |        |
|    |                                          |   | 83335             | 75862       | 159197      |           |        |
| 6. | Rainfall (mm)                            | : | Monsoon           | Non-monsoon | Annual      |           |        |
|    |                                          |   | 734.20            | 184.40      | 918.60      |           |        |
| 7. | River basin                              | : | Tapi              |             |             |           |        |
| 8. | Major soil types                         | : | Black Cotton Soil |             |             |           |        |
| B  | LAND USE                                 |   |                   |             |             |           |        |
| 1. | Forest area (Ha)                         | : | 10640             |             |             |           |        |
| 2. | Cultivable area (Ha)                     | : | 60669.10          |             |             |           |        |
| 3. | Net sown area (Ha)                       | : | 60669.10          |             |             |           |        |
| 4. | Gross cropped area (Ha)                  | : |                   |             |             |           |        |
| C  | CROPPING PATTERN (As in 2019-20)         |   |                   |             |             |           |        |
| 1. | Major crops grown                        | : | Kharif            | Rabi        | Summer      | Perennial |        |
|    |                                          |   | Cotton            | Wheat       |             |           |        |
|    |                                          |   | Maze              | Gram        |             |           |        |
|    |                                          |   | Jawar             |             |             |           |        |
|    |                                          |   |                   |             |             |           |        |
|    |                                          |   |                   |             |             |           |        |
|    |                                          |   |                   |             |             |           |        |
|    |                                          |   |                   |             |             |           |        |
| D  | IRRIGATION FACILITIES (As in 2019-20)    |   |                   |             |             |           |        |
| 1. | Net irrigated area (Ha)                  | : | 11266.26          |             |             |           |        |
| 2. | Gross irrigated area (Ha)                | : |                   |             |             |           |        |
| 3. | Area under irrigation (Ha) (Source-wise) | : | DW                | BW/TW       | Tanks/Ponds | Canals    | Others |
|    |                                          |   | 11266.26          |             |             | 0         |        |

| E  | GEOLOGY & HYDROGEOLOGY             |   |                  |
|----|------------------------------------|---|------------------|
| 1. | Predominant rocktype               | : | Hard Rock /      |
| 2. | Major geological formations        | : | Deccan Basalt    |
| 3. | Important water-bearing formations | : | Weathered Basalt |
| 4. | Status of coverage under NAQUIM    |   | Not Covered.     |

| <b>F GROUND WATER CONDITIONS</b> |                                                   |   |                   |                                            |                   |                  |                  |       |
|----------------------------------|---------------------------------------------------|---|-------------------|--------------------------------------------|-------------------|------------------|------------------|-------|
| 1.                               | No. of wells used for WaterLevel (WL) monitoring. | : | <b>Open wells</b> |                                            |                   | <b>BW/TW/ PZ</b> |                  |       |
|                                  |                                                   |   | CGWB              | SGWD                                       | Total             | CGWB             | SGWD             | Total |
|                                  |                                                   |   | 4                 | 16                                         | 20                |                  |                  |       |
| 2.                               | Monitoring mechanism (Nos.)                       | : | <b>Manual</b>     |                                            | <b>DWLR</b>       |                  | <b>Telemetry</b> |       |
|                                  |                                                   |   | CGWB              | SGWD                                       | CGWB              | SGWD             | CGWB             | SGWD  |
|                                  |                                                   |   | 4                 | 16                                         |                   |                  |                  |       |
| 3.                               | Monitoring frequency                              | : | Agency            | No. of times monitored/year                |                   |                  |                  |       |
|                                  |                                                   |   | CGWB              | 4                                          |                   |                  |                  |       |
|                                  |                                                   |   | SGWD              | 4                                          |                   |                  |                  |       |
| 4.                               | Period of water level data availability.          | : | Agency            | Period of WL data availability (From - To) |                   |                  |                  |       |
|                                  |                                                   |   |                   | From (year)                                |                   | To (year)        |                  |       |
|                                  |                                                   |   | CGWB              | 2015                                       |                   | 2019             |                  |       |
|                                  |                                                   |   | SGWD              | 2015                                       |                   | 2019             |                  |       |
| 5.                               | Water level range (m.bgl)                         | : | Minimum/Village   |                                            | Maximum/Village   |                  |                  |       |
|                                  | Pre-monsoon (April-May 2019)                      |   | 4.10/Pimpri PR U  |                                            | 8.00/Mundane PR A |                  |                  |       |
|                                  | Post-monsoon (November 2019)                      |   | 1.00/ShirasmaNI   |                                            | 3.50/rAJWAD       |                  |                  |       |
| 6.                               | Seasonal WL fluctuation range (m)                 | : | Minimum/ Village  |                                            | Maximum/ Village  |                  |                  |       |
|                                  |                                                   |   | 4.3/Tamaswadi     |                                            | 11/Dholi          |                  |                  |       |

| <b>G GROUND WATER QUALITY</b> |                                                      |  |                   |                                                                                                                    |       |                  |      |       |
|-------------------------------|------------------------------------------------------|--|-------------------|--------------------------------------------------------------------------------------------------------------------|-------|------------------|------|-------|
| 1.                            | No. of wells used for Water Quality (WQ) monitoring. |  | <b>Open Wells</b> |                                                                                                                    |       | <b>BW/TW/ PZ</b> |      |       |
|                               |                                                      |  | CGWB              | SGWD                                                                                                               | Total | CGWB             | SGWD | Total |
|                               |                                                      |  | 4                 | 16                                                                                                                 | 20    | 0                | 14   | 14    |
| 2.                            | Monitoring frequency                                 |  | Agency            | No. of times monitored/year                                                                                        |       |                  |      |       |
|                               |                                                      |  | CGWB              | 0                                                                                                                  |       |                  |      |       |
|                               |                                                      |  | SGWD              | 2 time (pre & post monsoon)                                                                                        |       |                  |      |       |
| 3.                            | Period of water quality data availability            |  | Agency            | Period of WQ data availability (Years)                                                                             |       |                  |      |       |
|                               |                                                      |  | CGWB              | 2015-2019                                                                                                          |       |                  |      |       |
|                               |                                                      |  | SGWD              | 2016-2019                                                                                                          |       |                  |      |       |
| 4.                            | Parameters analysed                                  |  | Agency            | Parameters Analysed                                                                                                |       |                  |      |       |
|                               |                                                      |  | CGWB              | Temperature ,pH, EC, TDS , Total Hardness , Alkalinity , Calcium , Chloride , Nitrate , Sulphate , Fluoride , Iron |       |                  |      |       |
|                               |                                                      |  | SGWD              | Temperature ,pH, EC, TDS , Total Hardness , Alkalinity , Calcium , Chloride , Nitrate , Sulphate , Fluoride , Iron |       |                  |      |       |
| 5.                            | Known ground water quality issues, if any            |  | No                |                                                                                                                    |       |                  |      |       |

| <b>H. GROUND WATER RESOURCES</b> |                                           |                        |
|----------------------------------|-------------------------------------------|------------------------|
| 1.                               | Latest assessment year                    | 2016-17                |
| 2.                               | Assessment Unit                           | Taluk/ Block/Watershed |
| 3.                               | Annual extractable GW resource (ha.m)     | 7225.18                |
| 4.                               | Current annual GW extraction (ha.m)       | 6164.45                |
| 5.                               | Net GW availability for future use (ha.m) | 643.62                 |

|    |                                                  |  |               |               |               |               |
|----|--------------------------------------------------|--|---------------|---------------|---------------|---------------|
| 6. | Stage of GW extraction (%)                       |  | 85.26         |               |               |               |
| 7. | Category of block/taluk/(2017)                   |  | Semi-Critical |               |               |               |
| 8. | Category of block/taluk/ in previous assessments |  | 2013          | 2011          | 2009          | 2004          |
|    |                                                  |  | Semi-Critical | Semi-Critical | Semi-Critical | Semi-Critical |

| <b>I</b> |                                                                                 | <b>WATER-RELATED SCHEMES</b> |                     |  |  |  |
|----------|---------------------------------------------------------------------------------|------------------------------|---------------------|--|--|--|
| 1.       | Schemes with a bearing on ground water, being implemented in the block / taluk. |                              |                     |  |  |  |
|          | Centrally Sponsored /Central Sector Schemes                                     | i)                           | NRDWP Sastanibility |  |  |  |
|          |                                                                                 | ii)                          | MGNAREGA            |  |  |  |
|          |                                                                                 | iii)                         | PMKSY               |  |  |  |
|          |                                                                                 | iv)                          |                     |  |  |  |
|          | State Schemes                                                                   | i)                           | Shivkalin           |  |  |  |
|          |                                                                                 | ii)                          | Jalyukta Shivar     |  |  |  |
|          |                                                                                 | iii)                         |                     |  |  |  |
|          |                                                                                 | iv)                          |                     |  |  |  |

| <b>J</b> |                                           | <b>GROUND WATER RELATED ISSUES</b> |                                     |  |  |  |
|----------|-------------------------------------------|------------------------------------|-------------------------------------|--|--|--|
| 1.       | Ground water related issues of the block/ |                                    |                                     |  |  |  |
|          | i) Issues related to GW availability      | :                                  | Taluka is in Semi-critical category |  |  |  |
|          | ii) Issues related to GW quality          | :                                  | No                                  |  |  |  |
|          | iii) Other issues if any.                 | :                                  | No                                  |  |  |  |

TABLE-01

## BASIC DATA OF WATER LEVEL (WL)/WATER QUALITY (WQ) WELLS LOCATIONS

## STATE-MAHARASHTRA, DISTRICT-JALGAON, TALUKA-PAROLA

| Sl. No | Well No.         | Village Name         | Long.      | Lat.       | Type of well<br>(DW/BW/TW/PZ) | Reduced Level (m.amsl) | Aquifer tapped | Height of measuring<br>point (m.agl) | Depth (m. bgl) | Diameter (m) | Purpose of<br>monitoring (WL/<br>WQ / WL & WQ) | Monitoring<br>mechanism (Manual/<br>DWLR/ Telemetry) | Agency |
|--------|------------------|----------------------|------------|------------|-------------------------------|------------------------|----------------|--------------------------------------|----------------|--------------|------------------------------------------------|------------------------------------------------------|--------|
| 1      | W204520075054501 | Adgaon               | 75.0946480 | 20.7569990 | DW                            |                        | Basalt         | 0.8                                  | 8              | 2.5          | WL                                             | Manual                                               | SGWD   |
| 2      | W205445075023401 | Bahadarpur           | 75.0422262 | 20.9143709 | DW                            |                        | Basalt         | 1.1                                  | 10             | 2.2          | WL                                             | Manual                                               | SGWD   |
| 3      | W204744075011001 | Bole                 | 75.0171550 | 20.7967200 | DW                            |                        | Basalt         | 0.7                                  | 7              | 1            | WL                                             | Manual                                               | SGWD   |
| 4      | W204648074594501 | Dholi                | 74.9947330 | 20.7807370 | DW                            |                        | Basalt         | 0                                    | 11.7           | 3            | WL                                             | Manual                                               | SGWD   |
| 5      | W205330074581001 | Jamde                | 74.9694360 | 20.8928620 | DW                            |                        | Basalt         | 0.5                                  | 8              | 6            | WL                                             | Manual                                               | SGWD   |
| 6      | W204931075113001 | Mangrool             | 75.1916667 | 20.8252778 | DW                            |                        | Basalt         | 0                                    | 17             | 3.5          | WL                                             | Manual                                               | SGWD   |
| 7      | W205253075090301 | Mhasve               | 75.1508333 | 20.8813889 | DW                            |                        | Basalt         | 0.8                                  | 10             | 2.5          | WL                                             | Manual                                               | SGWD   |
| 8      | W205125075012701 | Mondhale kh.         | 75.0242880 | 20.8563880 | DW                            |                        | Basalt         | 0.4                                  | 11.5           | 3            | WL                                             | Manual                                               | SGWD   |
| 9      | W205045075030501 | Mundane. Pr. Amalner | 75.0480650 | 20.8516330 | DW                            |                        | Basalt         | 0.3                                  | 14.4           | 6.5          | WL                                             | Manual                                               | SGWD   |
| 10     | W205231075071701 | Parola               | 75.1247750 | 20.8759949 | DW                            |                        | Basalt         | 0.6                                  | 8.5            | 4.5          | WL                                             | Manual                                               | SGWD   |
| 11     | W204958075041201 | Pimpri pr. utran.    | 75.0693930 | 20.8308480 | DW                            |                        | Basalt         | 0.5                                  | 7.2            | 6            | WL                                             | Manual                                               | SGWD   |
| 12     | W205802075120401 | Rajwad               | 75.2011111 | 20.9672222 | DW                            |                        | Basalt         | 0.1                                  | 12             | 2.8          | WL                                             | Manual                                               | SGWD   |
| 13     | W205325075130001 | Sarve Bk             | 75.2174020 | 20.8868350 | DW                            |                        | Basalt         | 0.4                                  | 13             | 5.8          | WL                                             | Manual                                               | SGWD   |
| 14     | W204627075084501 | Shirasmani           | 75.1437080 | 20.7738560 | DW                            |                        | Basalt         | 1.2                                  | 9              | 3            | WL                                             | Manual                                               | SGWD   |
| 15     | W204702075031001 | Tamaswadi            | 75.0527778 | 20.7838889 | DW                            |                        | Basalt         | 0.2                                  | 9.5            | 2.3          | WL                                             | Manual                                               | SGWD   |
| 16     | W204458075100601 | Titvishiv            | 75.1704315 | 20.7455223 | DW                            |                        | Basalt         | 0                                    | 10.9           | 2.4          | WL                                             | Manual                                               | SGWD   |

**TABLE-01-Continued**

| Sl. No | Well No.         | Village Name | Long.     | Lat.      | Type of well<br>(DW/BW/TW/PZ) | Reduced Level (m.amsl) | Aquifer tapped | Height of measuring point<br>(m.agl) | Depth (m.bgl) | Diameter (m) | Purpose of monitoring (WL,<br>WQ / WL & WQ) | Monitoring mechanism<br>(Manual/ DWLR/Telemetry) | Agency |
|--------|------------------|--------------|-----------|-----------|-------------------------------|------------------------|----------------|--------------------------------------|---------------|--------------|---------------------------------------------|--------------------------------------------------|--------|
| 1      | W204350075060001 | Talwade Kd   | 75.1      | 20.730556 | Dug Well                      | 287                    |                |                                      | 11.5          |              |                                             |                                                  | CGWB   |
| 2      | W205110075060001 | Sadavan Bk.  | 75.1      | 20.852778 | Dug Well                      | 204                    |                |                                      | 9             |              |                                             |                                                  | CGWB   |
| 3      | W205130075013001 | Mondhale     | 75.025    | 20.858333 | Dug Well                      | 255                    |                |                                      | 7.2           |              |                                             |                                                  | CGWB   |
| 4      | W205257075064701 | Parola-1     | 75.113056 | 20.8825   | Dug Well                      | 250                    |                |                                      | 12            |              |                                             |                                                  | CGWB   |
| 5      | W205622075034001 | Sirsala      | 75.061111 | 20.939444 | Dug Well                      | 306                    |                |                                      | 14            |              |                                             |                                                  | CGWB   |

**TABLE-02****WATER LEVEL (WL) DATA OF MONITORING WELLS-SGWD****STATE-MAHARASHTRA, DISTRICT-JALGAON, TALUKA- PAROLA**

| Sr.No. | Well ID          | Well Type | Village             | May-15 | Oct-15 | May-16 | Oct-16 | May-17 | Oct-17 | May-18 | Oct-18 | May-19 | Oct-19 |
|--------|------------------|-----------|---------------------|--------|--------|--------|--------|--------|--------|--------|--------|--------|--------|
| 1      | W204520075054501 | DW        | Adgaon              | 10.5   | 4.1    | 10.5   | 2.5    | 6.4    | 5.3    | 7.8    | 2.7    | 8      | 0.4    |
| 2      | W205445075023401 | DW        | Bahadarpur          | 7.1    | 5.1    | 8.2    | 3.7    | 7.3    | 5.4    | 7.2    | 4.1    | 8.7    | 0.8    |
| 3      | W204744075011001 | DW        | Bole                | 6.5    | 3.2    | 10.55  | 2.4    | 6.3    | 3.4    | 5.7    | 3      | 7      | 1      |
| 4      | W204648074594501 | DW        | Dholi               | 5.15   | 3.9    | 8      | 2.1    | 8      | 4.2    | 7.7    | 2.4    | 11.2   | 0.1    |
| 5      | W205330074581001 | DW        | Jamde               | 7.2    | 3.1    | 12.1   | 1.3    | 7.5    | 4      | 7.9    | 2.4    | 7      | 0.5    |
| 6      | W204931075113001 | DW        | Mangrool            | 8.5    | 3.9    |        | 1.7    | 16.5   | 5.2    | 13.3   | 5.3    | 13.1   | 1.1    |
| 7      | W205253075090301 | DW        | Mhasve              | 10     | 3.3    | 9      | 2.7    | 4.6    | 3.6    | 5.7    | 3.1    | 6.5    | 0.5    |
| 8      | W205125075012701 | DW        | Mondhale kh.        | 11.5   | 1.9    | 11.5   | 1.5    | 4.2    | 1.9    | 8.6    | 1.9    | 9.9    | 0.7    |
| 9      | W205045075030501 | DW        | Mundane. Pr. Amalne | 20     | 1.6    | 20     | 1.5    | 6.9    | 6.8    | 16.1   | 5.2    | 16.2   | 1.2    |
| 10     | W205231075071701 | DW        | Parola              | 7.85   | 4      | 8.5    | 2.9    | 7.2    | 3.3    | 7      | 3.1    | 7.8    | 1.1    |
| 11     | W204958075041201 | DW        | Pimpri pr. utran.   | 5.7    | 1.5    | 12.1   | 1.2    | 5.5    | 3.6    | 6.1    | 2      | 7.2    | 0.2    |
| 12     | W205802075120401 | DW        | Rajwad              | 6.8    | 6.9    | 10.2   | 6.1    | 12.5   | 9.5    | 11.9   | 7.8    | 12     | 4.2    |
| 13     | W205325075130001 | DW        | Sarve Bk            | 4.8    | 3.7    | 8.8    | 1.2    | 9.8    | 7      | 8.1    | 3.6    | 9.1    | 1.2    |
| 14     | W204627075084501 | DW        | Shirasmani          | 4.4    | 1.1    | 8.8    | 0.8    | 5.9    | 2.2    | 6      | 1.5    | 6.9    | 0.3    |
| 15     | W204702075031001 | DW        | Tamaswadi           | 6.1    | 5.7    | 9.5    | 3.4    | 6.2    | 6      | 7.3    | 4.2    | 7.4    | 2.7    |
| 16     | W204458075100601 | DW        | Titvishiv           | 6.4    | 2.1    | 10.81  | 0.7    | 11.9   | 3.6    | 9.2    | 1.9    | 8.2    | 0.6    |

**TABLE-02-Continued**

| <b>WATER LEVEL (WL) DATA OF MONITORING WELLS-CGWB</b>      |                  |           |            |        |        |        |        |        |        |        |        |        |        |
|------------------------------------------------------------|------------------|-----------|------------|--------|--------|--------|--------|--------|--------|--------|--------|--------|--------|
| <b>STATE-MAHARASHTRA, DISTRICT-JALGAON, TALUKA- PAROLA</b> |                  |           |            |        |        |        |        |        |        |        |        |        |        |
| Sr.No.                                                     | Well ID          | Well Type | Village    | May-15 | Nov-15 | May-16 | Nov-16 | May-17 | Nov-17 | May-18 | Nov-18 | May-19 | Nov-19 |
| 1                                                          | W204350075060001 | DW        | Talwade Kd | 6.9    | 4.6    | 10.2   | 2.67   | 5.6    | 2.85   | 9.1    | 4.4    |        | 2.9    |
| 2                                                          | W205130075013001 | DW        | Mondhale   | 5.1    | 5.2    |        | 3.11   |        | 4.2    | 6.1    | 4.4    | 7.19   | 1.84   |
| 3                                                          | W205257075064701 | DW        | Parola-1   | 6.5    | 5.8    | 7.9    | 3.05   | 3      | 3.6    | 6      | 4      | 4      | 2.5    |
| 4                                                          | W205622075034001 | DW        | Sirsala    | 14     | 8.3    |        | 3.46   | 7.7    | 3.17   | 9.9    | 7      | 11.95  | 2.3    |



TABLE-03

| WATER QUALITY (WQ) DATA OF MONITORING STATIONS-SGWD |                 |                 |       |                     |       |     |         |            |                   |                 |                 |                |                 |                       |             |           |           |        |
|-----------------------------------------------------|-----------------|-----------------|-------|---------------------|-------|-----|---------|------------|-------------------|-----------------|-----------------|----------------|-----------------|-----------------------|-------------|-----------|-----------|--------|
| STATE-MAHARASHTRA, DISTRICT-JALGAON, TALUKA- PAROLA |                 |                 |       |                     |       |     |         |            |                   |                 |                 |                |                 |                       |             |           |           |        |
| Sr. No.                                             | Name of Village | Type of Source  | Year  | Sample Testing Date | Temp  | pH  | EC      | TDS (mg/L) | Alkalinity (mg/L) | Chloride (mg/L) | Fluoride (mg/L) | Nitrate (mg/L) | Sulphate (mg/L) | Total Hardness (mg/L) | Iron (mg/L) | Ca (mg/L) | Mg (mg/L) | Remark |
| 1                                                   | ADGAON          | PWSS            | 17-18 | 23.05.2017          | 370C  | 8.1 | 494     | 321        | 140               | 59.981          | 0.697           | 8.55876        | 25.84           | 168                   | 0.008       | NA        | NA        | FIT    |
| 2                                                   | ADGAON          | PWSS            | 18-19 | 24.05.2018          | 370C  | 7.7 | 1927.69 | 1253       | 356               | 257.92          | 0.602           | 80.3           | 21.89           | 356                   | 0.005       | NA        | NA        | UNFIT  |
| 3                                                   | ADGAON          | PWSS            | 19-20 | 10.05.2019          | 37° C | 7.9 | 1126.15 | 732        | 76                | 126             | 0.315           | 93.4           | 53.68           | 364                   | 0.162       | NA        | NA        | UNFIT  |
| 4                                                   | BAHADARPUR      | PWSS            | 16-17 | 23.11.2016          | 370C  | 8.3 | 1312.31 | 853        | 292               | 153.95          | 0.683           | 85.88          | NA              | 256                   | 0.012       | NA        | NA        | UNFIT  |
| 5                                                   | BAHADARPUR      | PWSS            | 17-18 | 23.05.2017          | 370C  | 8.2 | 832     | 541        | 236               | 95.97           | 0.856           | 25.6763        | 41.7            | 232                   | 0.007       | NA        | NA        | FIT    |
| 6                                                   | BAHADARPUR      | ore well with f | 18-19 | 14.11.2018          | 370C  | 7.7 | 2107.69 | 1370       | 40                | 540             | 0.1             | 9.84346        | 110             | 240                   | 0.05        | NA        | NA        | FIT    |
| 7                                                   | BAHADARPUR      | BOREWELL        | 19-20 | 27.05.2019          | 37° C | 7.9 | 1918.46 | 1247       | 240               | 370             | 0.321           | 22             | 139.4           | 368                   | 0.1         | NA        | NA        | FIT    |
| 8                                                   | BOLE            | OPEN WELL       | 17-18 | 26.05.2017          | 370C  | 8.3 | 683     | 444        | 212               | 79.975          | 0.701           | 13.0596        | 42.18           | 276                   | 0.011       | NA        | NA        | FIT    |
| 9                                                   | BOLE            | OPEN WELL       | 18-19 | 22.05.2018          | 370C  | 8   | 773.846 | 503        | 240               | 83.974          | 0.812           | 26.94          | 28.91           | 316                   | 0.845       | NA        | NA        | FIT    |
| 10                                                  | BOLE            | OPEN WELL       | 19-20 | 21.05.2019          | 37° C | 8.1 | 1193.85 | 776        | 80                | 192             | 0.108           | 84.42          | 71.08           | 260                   | 0.184       | NA        | NA        | UNFIT  |
| 11                                                  | DHOLI           | OPEN WELL       | 16-17 | 18.11.2016          | 370C  | 8.5 | 330.769 | 215        | 60                | 39.988          | 0.219           | 17.1884        | NA              | 168                   | 0.143       | NA        | NA        | FIT    |
| 12                                                  | DHOLI           | OPEN WELL       | 17-18 | 26.05.2017          | 370C  | 8.1 | 805     | 523        | 212               | 89.972          | 0.802           | 23.541         | 70.81           | 304                   | 0.113       | NA        | NA        | FIT    |
| 13                                                  | DHOLI           | OPEN WELL       | 18-19 | 22.05.2018          | 370C  | 8.4 | 618.462 | 402        | 120               | 75.976          | 1.016           | 2.898          | 31.97           | 124                   | 0.987       | NA        | NA        | FIT    |
| 14                                                  | DHOLI           | OPEN WELL       | 19-20 | 22.05.2019          | 37° C | 8.3 | 818.462 | 532        | 120               | 82              | 0.801           | 59.88          | 46.16           | 204                   | 0.1         | NA        | NA        | UNFIT  |
| 15                                                  | JAMDE           | HANDPUMP        | 16-17 | 18.11.2016          | 370C  | 8.1 | 767.692 | 499        | 80                | 47.985          | 1.42            | 79.9792        | NA              | 332                   | 0.02        | NA        | NA        | UNFIT  |
| 16                                                  | JAMDE           | HANDPUMP        | 17-18 | 22.05.2017          | 370C  | 7.4 | 526     | 342        | 100               | 69.978          | 0.869           | 4.39899        | 63.74           | 200                   | 0.005       | NA        | NA        | FIT    |
| 17                                                  | JAMDE           | HANDPUMP        | 18-19 | 22.05.2018          | 370C  | 8.5 | 1460    | 949        | 420               | 139.96          | 1.359           | 44.94          | 50.15           | 404                   | 0.065       | NA        | NA        | FIT    |
| 18                                                  | JAMDE           | HANDPUMP        | 19-20 | 21.11.2019          | 260C  | 8.5 | 1321.83 | 859.19     | 448               | 118             | 0.8             | 66.45          | 49              | 176                   | 0.11        | NA        | NA        | UNFIT  |
| 19                                                  | MANGRUL         | OPEN WELL       | 17-18 | 19.05.2017          | 370C  | 8.1 | 1048    | 681        | 164               | 85.973          | 0.494           | 16.0765        | 52.5            | 416                   | 0.014       | NA        | NA        | FIT    |
| 20                                                  | MANGRUL         | HANDPUMP        | 18-19 | 19.11.2018          | 370C  | 8.2 | 801.538 | 521        | 120               | 116             | 0.21            | 68             | 29              | 312                   | 0.39        | NA        | NA        | UNFIT  |
| 21                                                  | MANGRUL         | HANDPUMP        | 19-20 | 26.11.2019          | 260C  | 8.1 | 983.335 | 639.17     | 84                | 236             | 0.2             | 86.828         | 63              | 168                   | 0.01        | NA        | NA        | UNFIT  |
| 22                                                  | MHASVE          | OPEN WELL       | 17-18 | 22.05.2017          | 370C  | 7.6 | 922     | 599        | 240               | 83.974          | 0.475           | 9.00619        | 87.42           | 440                   | BDL         | NA        | NA        | FIT    |
| 23                                                  | MHASVE          | OPEN WELL       | 18-19 | 24.05.2018          | 370C  | 8.2 | 760     | 494        | 216               | 65.98           | 0.643           | 5.546          | 69.72           | 316                   | 0.28        | NA        | NA        | FIT    |
| 24                                                  | MHASVE          | OPEN WELL       | 19-20 | 01.05.2019          | 37° C | 8.4 | 860     | 559        | 144               | 92              | 0.51            | 15.63          | 29.99           | 256                   | 0.1         | NA        | NA        | FIT    |
| 25                                                  | MOHADI          | OPEN WELL       | 16-17 | 05.11.2016          | 370C  | 8.4 | 453.846 | 295        | 56                | 35.989          | 0.06            | 71.9875        | NA              | 228                   | 0.025       | NA        | NA        | UNFIT  |
| 26                                                  | MOHADI          | OPEN WELL       | 17-18 | 19.05.2017          | 370C  | 7.9 | 823     | 535        | 132               | 47.985          | 0.617           | 48.0212        | 18.23           | 268                   | 0.106       | NA        | NA        | UNIFT  |

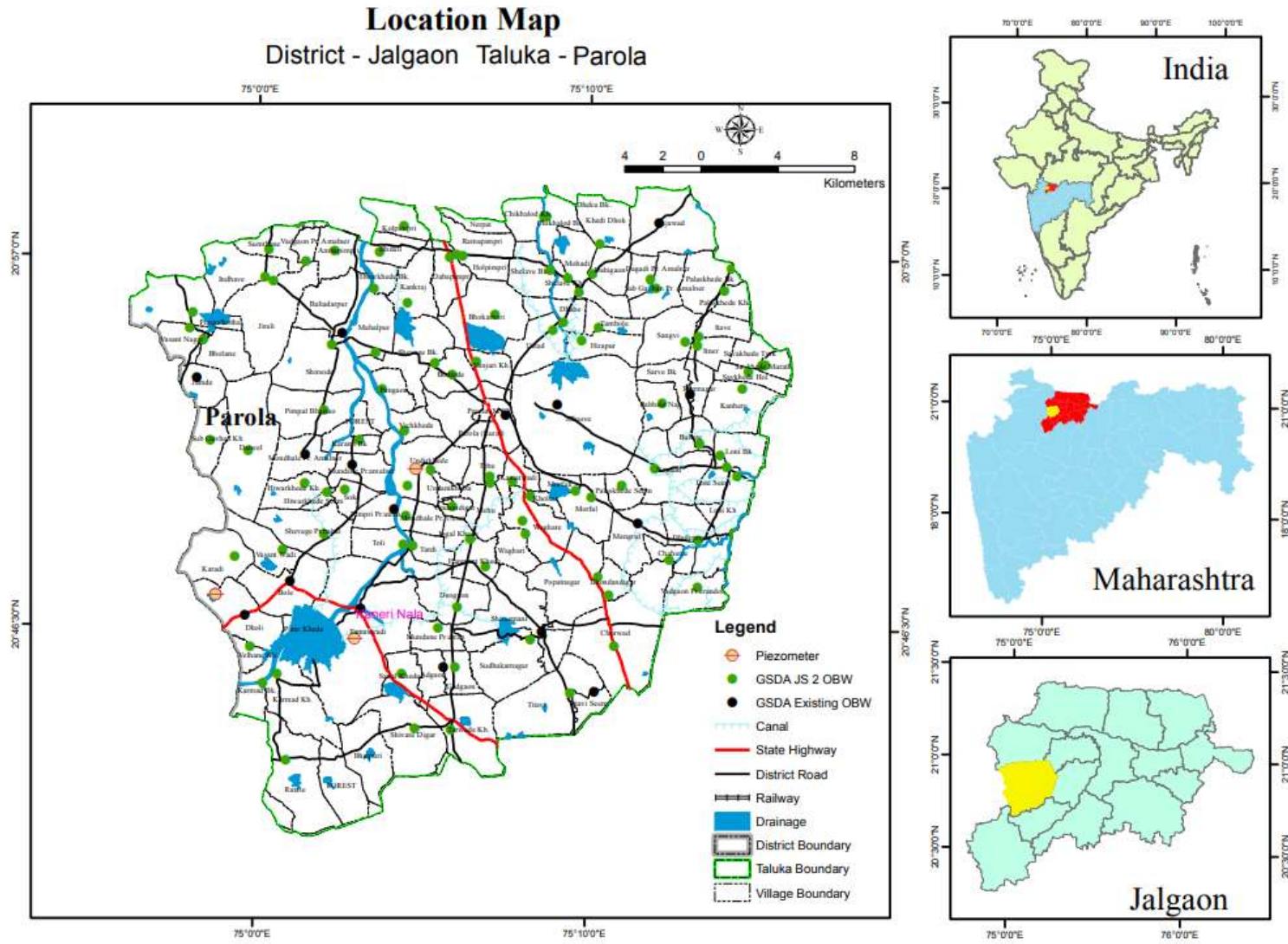
|    |                      |           |       |            |       |     |         |        |     |        |       |         |       |     |       |    |    |       |
|----|----------------------|-----------|-------|------------|-------|-----|---------|--------|-----|--------|-------|---------|-------|-----|-------|----|----|-------|
| 27 | MONDHALE PR. AMALNER | OPEN WELL | 16-17 | 18.11.2016 | 370C  | 8.1 | 1455.38 | 946    | 44  | 101.97 | 0.069 | 94.0046 | NA    | 472 | 0.326 | NA | NA | UNFIT |
| 28 | MONDHALE PR. AMALNER | PWSS      | 17-18 | 23.05.2017 | 370C  | 8   | 500     | 325    | 152 | 65.98  | 0.822 | 7.78794 | 30.36 | 192 | 0.007 | NA | NA | FIT   |
| 29 | MONDHALE PR. AMALNER | PWSS      | 18-19 | 23.05.2018 | 370C  | 8.4 | 592.308 | 385    | 124 | 75.976 | 0.725 | 5.884   | 32.17 | 180 | 0.005 | NA | NA | FIT   |
| 30 | MONDHALE PR. AMALNER | OPEN WELL | 19-20 | 21.11.2019 | 260C  | 8.5 | 1263    | 820.95 | 452 | 120    | 1     | 62.02   | 45    | 140 | 0.1   | NA | NA | UNFIT |
| 31 | PIMPRI PR.UTRAN      | OPEN WELL | 18-19 | 24.05.2018 | 370C  | 8.1 | 1249.23 | 812    | 400 | 131.96 | 1.48  | 64.56   | 22.19 | 240 | BDL   | NA | NA | UNFIT |
| 32 | PIMPRI PR.UTRAN      | OPEN WELL | 19-20 | 21.05.2019 | 37° C | 8.1 | 1136.92 | 739    | 76  | 210    | 0.51  | 83.76   | 73.37 | 232 | 0.1   | NA | NA | UNFIT |
| 33 | RAJAWAD              | OPEN WELL | 17-18 | 24.11.2017 | 370C  | 8.2 | 313.846 | 204    | 188 | 29.991 | 0.061 | 2.592   | 18.26 | 160 | 0.116 | NA | NA | FIT   |
| 34 | RAJAWAD              | OPEN WELL | 18-19 | 23.05.2018 | 370C  | 8.3 | 458.462 | 298    | 244 | 21.993 | 0.776 | BDL     | 14.98 | 244 | 0.007 | NA | NA | FIT   |
| 35 | RAJAWAD              | OPEN WELL | 19-20 | 09.05.2019 | 37° C | 8.5 | 676.923 | 440    | 148 | 38     | 0.336 | 14.274  | 20.36 | 196 | 0.362 | NA | NA | FIT   |
| 36 | SARVE BK             | OPEN WELL | 16-17 | 03.12.2016 | 370C  | 8   | 1389.23 | 903    | 180 | 185.94 | 1.128 | 87.4482 | NA    | 600 | 0.042 | NA | NA | UNFIT |
| 37 | SARVE BK             | OPEN WELL | 17-18 | 26.05.2017 | 370C  | 8   | 1194    | 776    | 184 | 127.96 | 0.809 | 46.1163 | 81.95 | 488 | 0.006 | NA | NA | UNIFT |
| 38 | SARVE BK             | OPEN WELL | 18-19 | 25.05.2018 | 370C  | 7.9 | 1256.92 | 817    | 284 | 95.97  | 0.899 | 87.24   | 61.91 | 372 | 0.725 | NA | NA | UNFIT |
| 39 | SARVE BK             | OPEN WELL | 19-20 | 11.11.2019 | 260C  | 8.4 | 616.348 | 400.63 | 136 | 50     | 0.2   | 0.886   | 25    | 188 | 0.1   | NA | NA | FIT   |
| 40 | SHIRASMANI           | OPEN WELL | 17-18 | 27.11.2017 | 370C  | 8.5 | 558.462 | 363    | 212 | 39.988 | 0.287 | 0.917   | 14.68 | 260 | 0.058 | NA | NA | FIT   |
| 41 | SHIRASMANI           | OPEN WELL | 18-19 | 28.05.2018 | 370C  | 8.4 | 624.615 | 406    | 236 | 41.987 | 0.663 | 2.294   | 34.24 | 116 | 0.508 | NA | NA | FIT   |
| 42 | SHIRASMANI           | OPEN WELL | 19-20 | 23.05.2019 | 37° C | 8   | 886.154 | 576    | 84  | 156    | 0.41  | 21      | 51.62 | 260 | 0.1   | NA | NA | FIT   |
| 43 | TAMASWADI            | OPEN WELL | 16-17 | 18.11.2016 | 370C  | 8.3 | 427.692 | 278    | 40  | 49.985 | 0.27  | 19.2173 | NA    | 180 | 0.017 | NA | NA | FIT   |
| 44 | TAMASWADI            | OPEN WELL | 17-18 | 19.05.2017 | 370C  | 8.5 | 514     | 334    | 148 | 73.977 | 0.603 | 10.0738 | 31.95 | 180 | 0.01  | NA | NA | FIT   |
| 45 | TAMASWADI            | PWSS      | 18-19 | 26.11.2018 | 370C  | 8.1 | 716.923 | 466    | 76  | 114    | 0.5   | 72      | 27    | 336 | 0.06  | NA | NA | UNFIT |
| 46 | TAMASWADI            | PWSS      | 19-20 | 10.05.2019 | 37° C | 8.4 | 1109.23 | 721    | 192 | 132    | 0.558 | 42.84   | 32.58 | 300 | 0.328 | NA | NA | FIT   |
| 47 | TITAVI               | OPEN WELL | 16-17 | 25.11.2016 | 370C  | 7.7 | 375.385 | 244    | 144 | 41.987 | 0.725 | 14.8139 | NA    | 200 | 0.086 | NA | NA | FIT   |
| 48 | TITAVI               | OPEN WELL | 17-18 | 24.05.2017 | 370C  | 8.2 | 548     | 356    | 164 | 39.988 | 1.022 | 17.5339 | 44.59 | 220 | 0.532 | NA | NA | FIT   |
| 49 | TITAVI               | OPEN WELL | 18-19 | 28.05.2018 | 370C  | 8.3 | 883.077 | 574    | 244 | 43.986 | 0.443 | 37.78   | 76.14 | 116 | 0.457 | NA | NA | FIT   |
| 50 | TITAVI               | OPEN WELL | 19-20 | 24.05.2019 | 37° C | 7.2 | 487.692 | 317    | 40  | 102    | 0.143 | 34.02   | 23.91 | 84  | 0.1   | NA | NA | FIT   |

TABLE-03- Continued

| WATER QUALITY (WQ) DATA OF MONITORING STATIONS-CGWB |                  |           |             |                 |      |            |     |     |       |     |       |      |     |     |     |      |
|-----------------------------------------------------|------------------|-----------|-------------|-----------------|------|------------|-----|-----|-------|-----|-------|------|-----|-----|-----|------|
| STATE-MAHARASHTRA, DISTRICT-JALGAON, TALUKA-PAROLA  |                  |           |             |                 |      |            |     |     |       |     |       |      |     |     |     |      |
| Sr.No.                                              | Well No./Locaton | Well Type | Village     | Date of Testing | Temp | EC (µS/cm) | pH  |     |       |     |       |      |     |     |     |      |
|                                                     |                  |           |             |                 |      |            |     | Ca  | Mg    | Na  | K     | HCO3 | CL  | SO4 | NO3 | F    |
| 1                                                   | W204350075060001 |           | Talwade Kd  | 5/21/2017       |      | 1125       | 7.9 | 82  | 45.81 | 70  | 2.2   | 398  | 58  | 56  | 160 | 0.38 |
| 2                                                   | W204350075060001 |           | Talwade Kd  | 5/21/2015       |      |            |     |     |       |     |       |      |     |     |     |      |
| 3                                                   | W204350075060001 |           | Talwade Kd  | 5/21/2015       |      | 659        | 7.8 | 60  | 40.19 | 46  | 1.98  | 336  | 74  | 33  | 16  | 0.3  |
| 4                                                   | W204350075060001 |           | Talwade Kd  | 5/21/2016       |      | 1528       | 7.6 | 132 | 77.23 | 39  | 1.3   | 332  | 193 | 178 | 38  | 0.24 |
| 5                                                   | W205110075060001 |           | Sadavan Bk. | 5/21/2015       |      |            |     |     |       |     |       |      |     |     |     |      |
| 6                                                   | W205130075013001 |           | Mondhale    | 5/21/2015       |      |            |     |     |       |     |       |      |     |     |     |      |
| 7                                                   | W205130075013001 |           | Mondhale    | 5/21/2015       |      | 841        | 8.1 | 44  | 51.11 | 37  | 2.89  | 281  | 89  | 58  | 10  | 0.71 |
| 8                                                   | W205257075064701 |           | Parola-1    | 5/21/2017       |      | 2501       | 7.9 | 133 | 43.32 | 293 | 15.1  | 589  | 237 | 66  | 220 | 0.18 |
| 9                                                   | W205257075064701 |           | Parola-1    | 5/21/2016       |      | 2543       | 7.8 | 156 | 96.71 | 111 | 25.1  | 356  | 334 | 132 | 37  | 0.16 |
| 10                                                  | W205257075064701 |           | Parola-1    | 5/21/2015       |      |            |     |     |       |     |       |      |     |     |     |      |
| 11                                                  | W205257075064701 |           | Parola-1    | 5/21/2015       |      | 2195       | 7.6 | 156 | 97.44 | 121 | 22.21 | 293  | 425 | 182 | 53  | 0.26 |
| 12                                                  | W205622075034001 |           | Sirsala     | 5/21/2017       |      | 1068       | 7.7 | 80  | 45.81 | 55  | 1.4   | 315  | 73  | 50  | 180 | 0.37 |
| 13                                                  | W210820075581001 |           | Balvadi     | 5/21/2016       |      | 811        | 8   | 46  | 52.09 | 37  | 0.5   | 303  | 27  | 26  | 29  | 0.14 |
| 14                                                  | W210820075581001 |           | Balvadi     | 5/21/2015       |      |            |     |     |       |     |       |      |     |     |     |      |
| 15                                                  | W210820075581001 |           | Balvadi     | 5/21/2015       |      | 554        | 8.1 | 56  | 28.03 | 52  | 1.72  | 354  | 64  | 7   | 10  | 0.13 |
| 16                                                  | W211211075591701 |           | Vivra Bk    | 5/21/2016       |      | 1355       | 8   | 102 | 71.36 | 56  | 1.9   | 488  | 123 | 94  | 35  | 0.08 |
| 17                                                  | W211211075591701 |           | Vivra Bk    | 5/21/2017       |      | 1273       | 8   | 51  | 77.01 | 52  | 1.2   | 345  | 93  | 50  | 50  | 0.12 |
| 18                                                  | W211229075530001 |           | Khiroda -2  | 5/21/2016       |      | 1397       | 8   | 60  | 88.33 | 79  | 0.2   | 498  | 105 | 87  | 34  | 0.29 |
| 19                                                  | W211229075530001 |           | Khiroda -2  | 5/21/2017       |      | 780        | 8.4 | 31  | 43.19 | 85  | 0.4   | 351  | 26  | 13  | 41  | 0.44 |
| 20                                                  | W211450076020401 |           | Raver1      | 5/21/2015       |      | 974        | 8   | 50  | 57.2  | 38  | 0.47  | 256  | 131 | 34  | 32  | 0.29 |
| 21                                                  | W211450076020401 |           | Raver1      | 5/21/2015       |      |            |     |     |       |     |       |      |     |     |     |      |
| 22                                                  | W211450076020401 |           | Raver1      | 5/21/2017       |      | 1076       | 8.2 | 41  | 35.91 | 138 | 0.6   | 476  | 53  | 30  | 64  | 0.2  |
| 23                                                  | W211450076020401 |           | Raver1      | 5/21/2016       |      | 1110       | 8.1 | 56  | 52.1  | 91  | 0.2   | 351  | 85  | 155 | 37  | 0.18 |
| 24                                                  | W211630076065801 |           | Khanapur-1  | 5/21/2017       |      | 1063       | 8.7 | 12  | 39.89 | 135 | 0.6   | 398  | 58  | 38  | 20  | 0.68 |

|    |                  |  |            |           |  |      |     |     |       |     |      |     |     |     |     |      |
|----|------------------|--|------------|-----------|--|------|-----|-----|-------|-----|------|-----|-----|-----|-----|------|
| 25 | W210935075415501 |  | Yawal-1    | 5/21/2017 |  | 1993 | 7.9 | 123 | 92.9  | 131 | 0.8  | 172 | 190 | 31  | 771 | 0.07 |
| 26 | W210935075415501 |  | Yawal-1    | 5/21/2016 |  | 1534 | 7.9 | 108 | 76.23 | 57  | 1.4  | 239 | 213 | 170 | 37  | 0.1  |
| 27 | W211000075513501 |  | Faizpur    | 5/21/2015 |  | 782  | 8   | 28  | 45.01 | 103 | 0.73 | 409 | 82  | 12  | 56  | 0.2  |
| 28 | W211000075513501 |  | Faizpur    | 5/21/2015 |  |      |     |     |       |     |      |     |     |     |     |      |
| 29 | W211000075513501 |  | Faizpur    | 5/21/2016 |  | 728  | 7.9 | 38  | 44.78 | 38  | 0.5  | 303 | 46  | 16  | 25  | 0.15 |
| 30 | W211017075374501 |  | Sakli-1    | 5/21/2016 |  | 1502 | 7.7 | 90  | 90.8  | 57  | 0.2  | 488 | 167 | 148 | 34  | 0.13 |
| 31 | W211017075374501 |  | Sakli-1    | 5/21/2017 |  | 1525 | 7.7 | 88  | 94.2  | 63  | 0.7  | 375 | 105 | 40  | 340 | 0.13 |
| 32 | W211048075445301 |  | Sangvi Bk  | 5/21/2015 |  | 771  | 7.8 | 40  | 63.26 | 60  | 0.67 | 342 | 99  | 12  | 33  | 0.26 |
| 33 | W211048075445301 |  | Sangvi Bk  | 5/21/2015 |  |      |     |     |       |     |      |     |     |     |     |      |
| 34 | W211048075445301 |  | Sangvi Bk  | 5/21/2017 |  | 841  | 8.5 | 27  | 64.34 | 63  | 1    | 190 | 56  | 31  | 140 | 0.11 |
| 35 | W211048075445301 |  | Sangvi Bk  | 5/21/2016 |  | 1114 | 7.9 | 66  | 62.81 | 78  | 0.2  | 312 | 67  | 174 | 85  | 0.12 |
| 36 | W211221075345501 |  | Kingaon    | 5/21/2016 |  | 1150 | 7.6 | 88  | 65.27 | 33  | 0.8  | 254 | 116 | 209 | 39  | 0.08 |
| 37 | W211221075345501 |  | Kingaon    | 5/21/2017 |  | 1268 | 7.7 | 90  | 63.32 | 54  | 0.4  | 309 | 83  | 29  | 280 | 0.1  |
| 38 | W211221075345501 |  | Kingaon    | 5/21/2015 |  | 1110 | 7.7 | 102 | 57.26 | 54  | 0.31 | 238 | 199 | 44  | 43  | 0.11 |
| 39 | W211221075345501 |  | Kingaon    | 5/21/2015 |  |      |     |     |       |     |      |     |     |     |     |      |
| 40 | W211515075443001 |  | Dangarda   | 5/21/2015 |  | 575  | 7.9 | 78  | 24.41 | 41  | 3.2  | 397 | 46  | 25  | 11  | 0.26 |
| 41 | W211515075443001 |  | Dangarda   | 5/21/2017 |  | 882  | 7.9 | 51  | 51    | 51  | 1    | 345 | 48  | 20  | 86  | 0.11 |
| 42 | W211515075443001 |  | Dangarda   | 5/21/2015 |  |      |     |     |       |     |      |     |     |     |     |      |
| 43 | W211641075350701 |  | Waghijhira | 5/21/2017 |  | 611  | 8.4 | 41  | 29.59 | 28  | 0.9  | 238 | 36  | 25  | 46  | 0.26 |
| 44 | W211641075350701 |  | Waghijhira | 5/21/2016 |  | 832  | 8   | 108 | 33.68 | 20  | 0.7  | 322 | 36  | 153 | 28  | 0.31 |

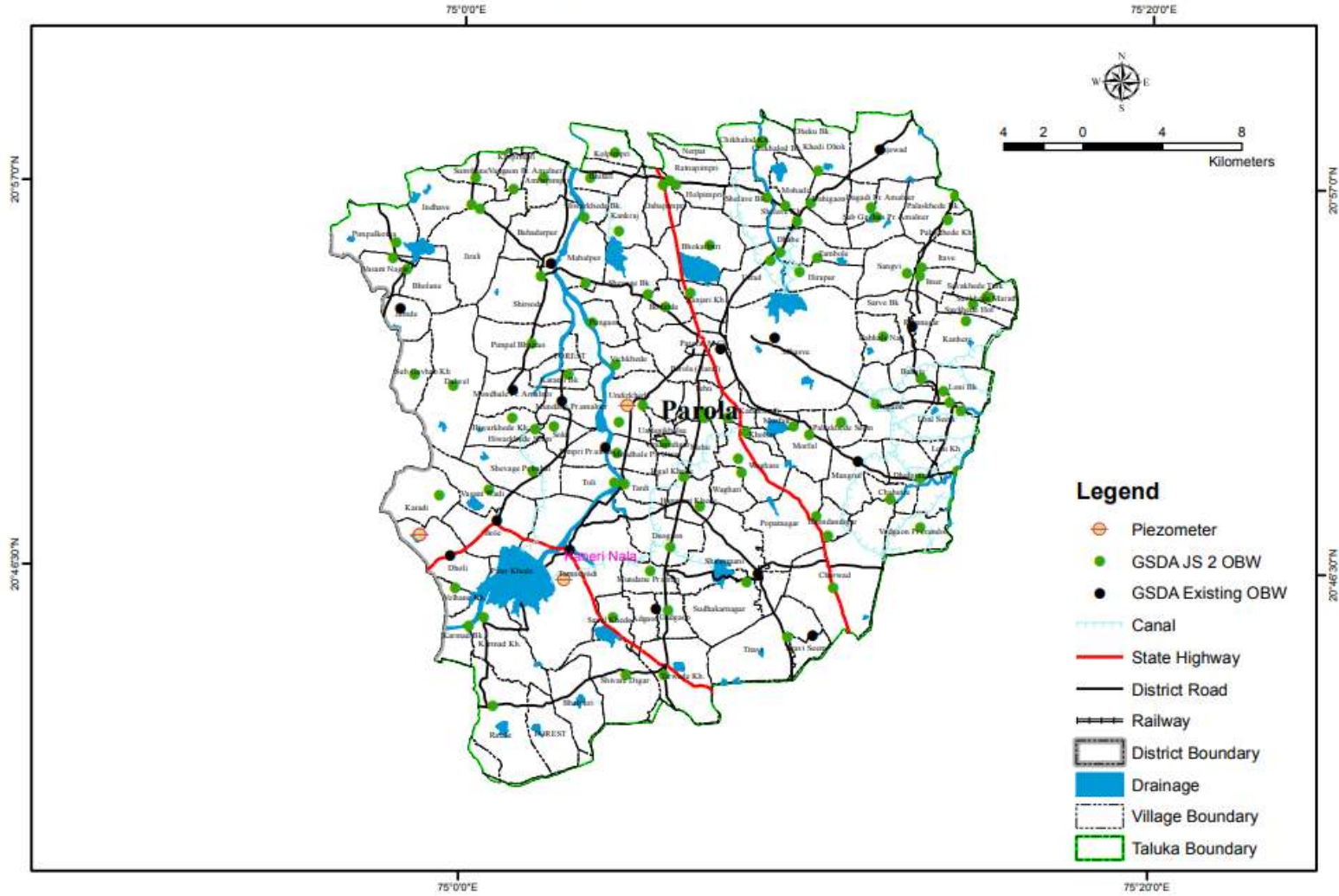
# MAP-01-LOCATION MAP



MAP-02-Base MAP

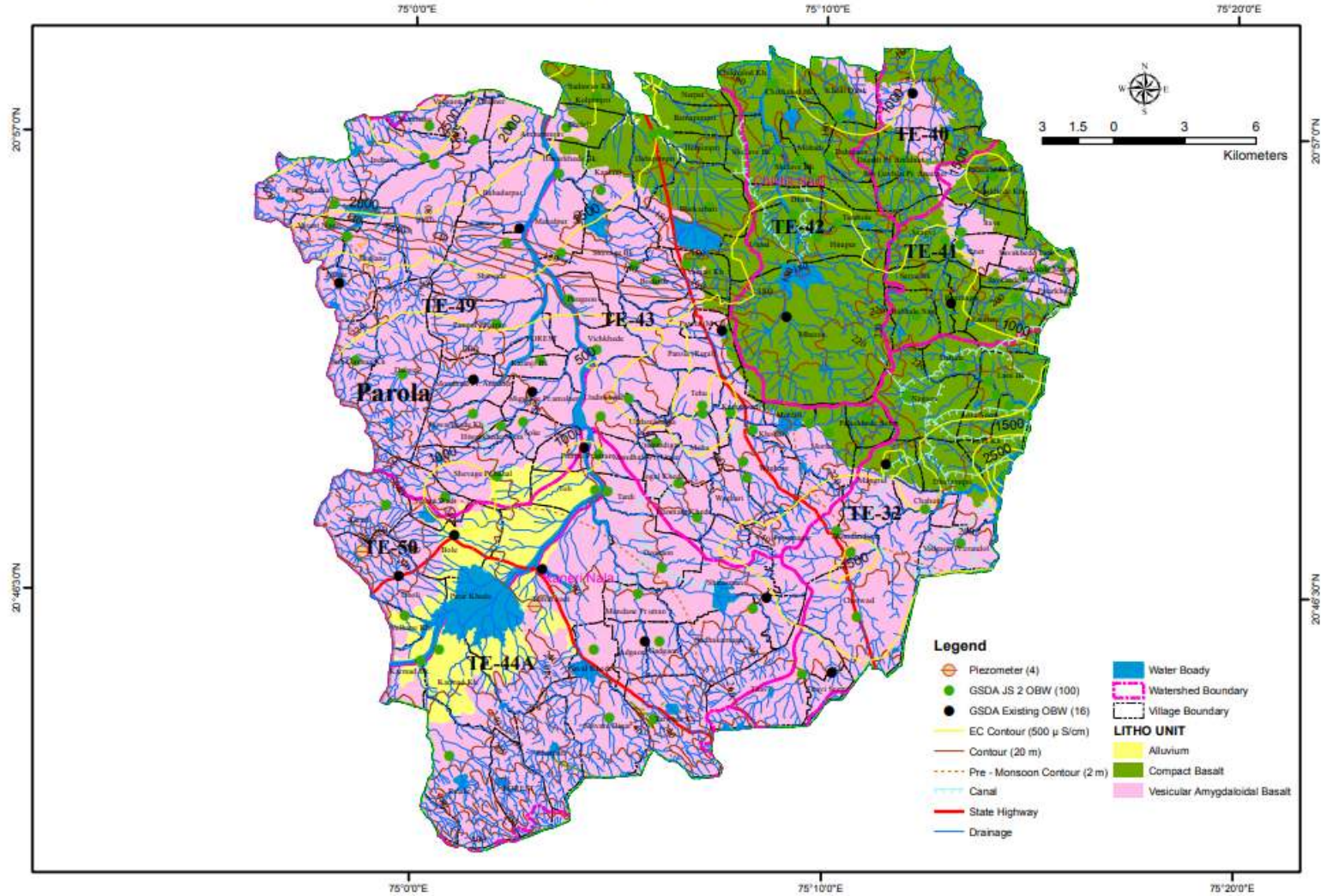
Base Map

District - Jalgaon Taluka - Parola

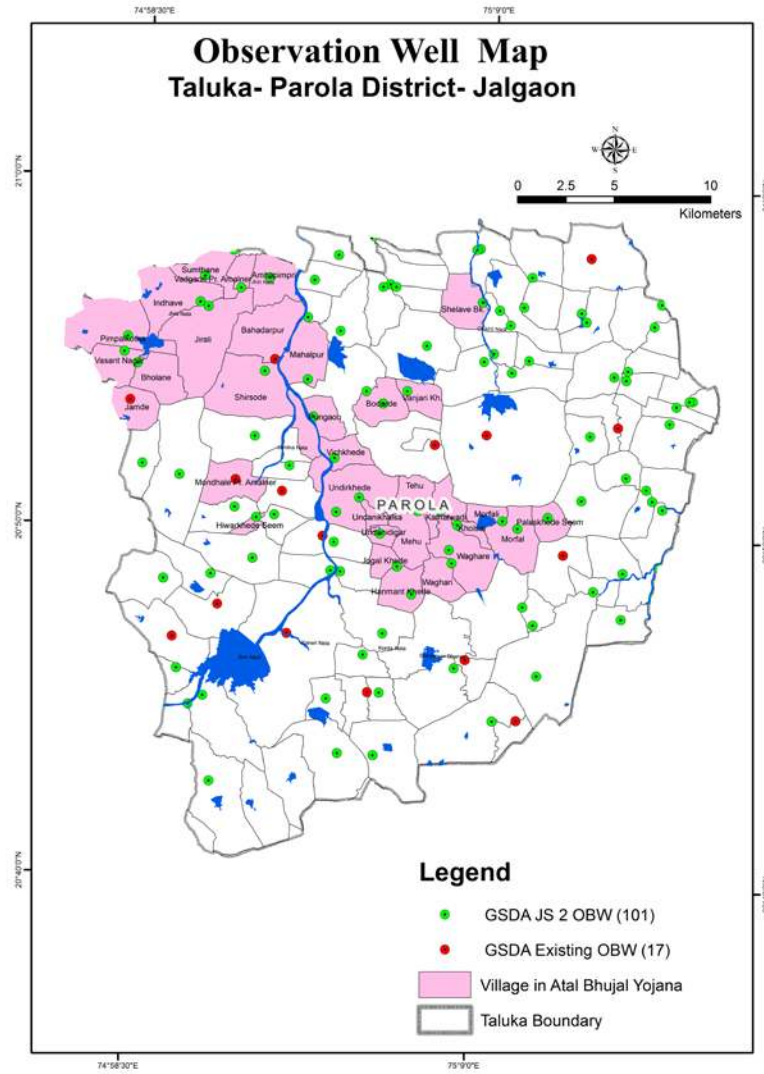


MAP-03-HYDROGEOLOGICAL MAP

**Hydrogeological Map**  
District - Jalgaon Taluka - Parola

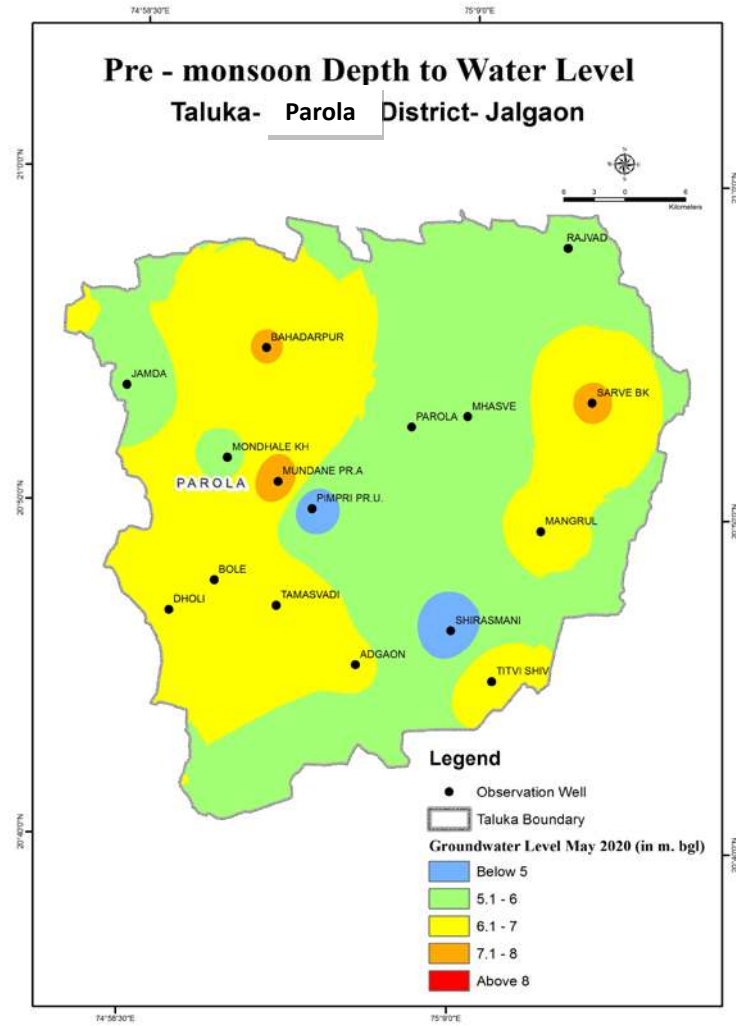


# MAP-04-LOCATION OF OBW MAP

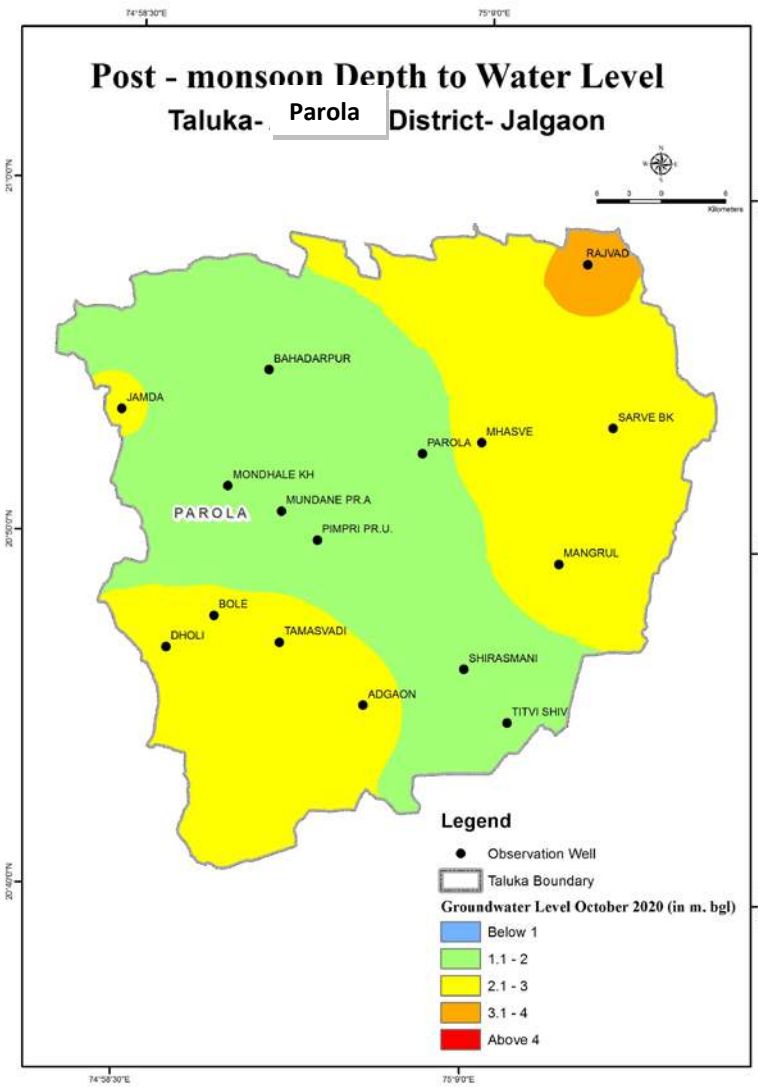




**MAP-05-PRE-MONSOON GWL MAP**



**MAP -06- POST-MONSOON GWL MAP**



MAP NO-07-GW ELECTRIC CONDUCTIVITY MAP

Distribution of Electrical Conductivity Map

District - Jalgaon Taluka - Parola

